

TOOTSIE TOYS



DOWST MANUFACTURING CO.
CHICAGO, ILL.



GOOD NEWS

* ONE *

ADD-A-ROOM DOLL HOUSE

—Made of heavy container board in contrasting colors to furniture is now included with each set of TootsieToy Doll House Furniture—FREE.

* TWO *

FURNITURE is now made of new alloy with tensile strength five times that of the old—yet lighter.

* THREE *

FINISHED in harmonious colors—packed in colorful box with pilfer proof display feature.

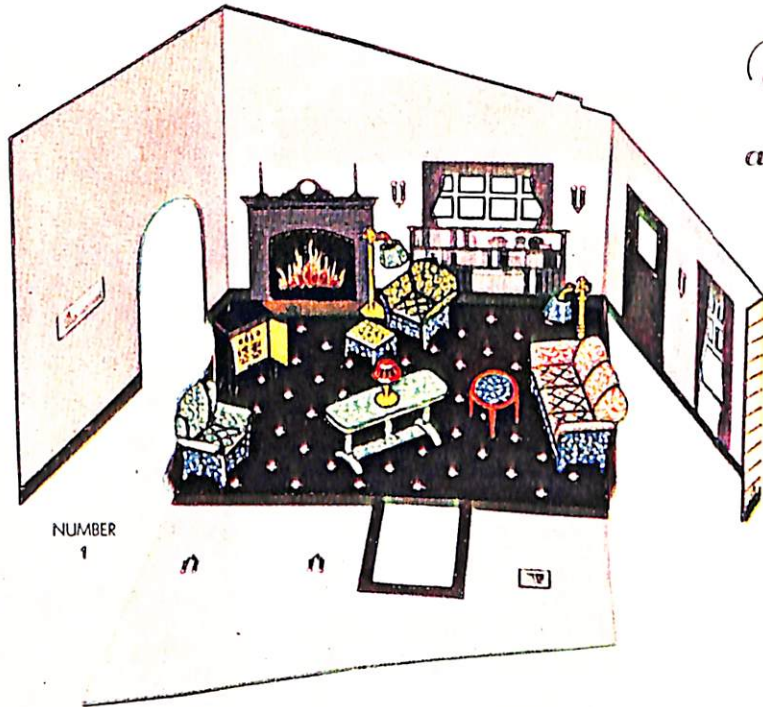
ORDER A STOCK TODAY

Watch Them
Walk off the Counter



F

TOOTSIETOYS



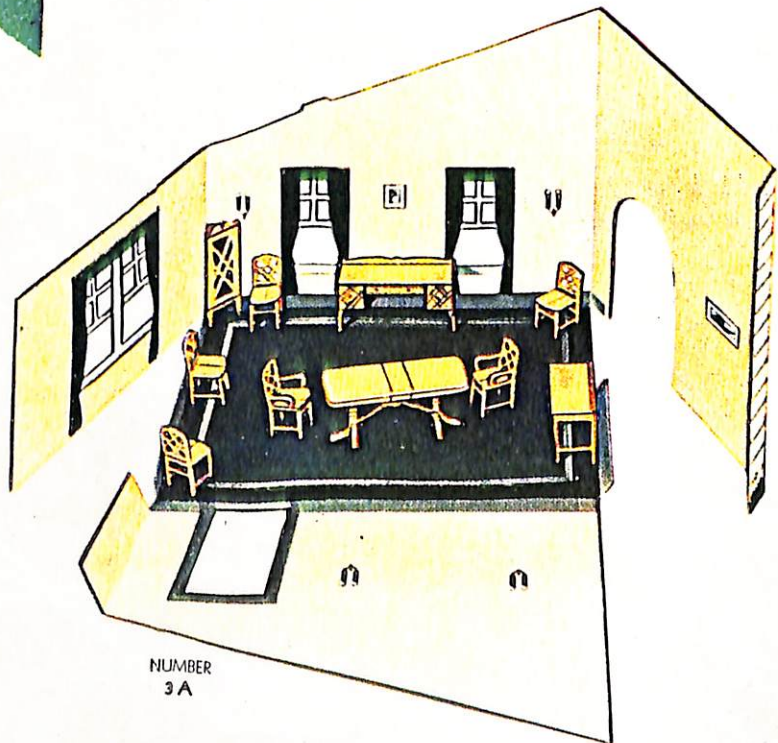
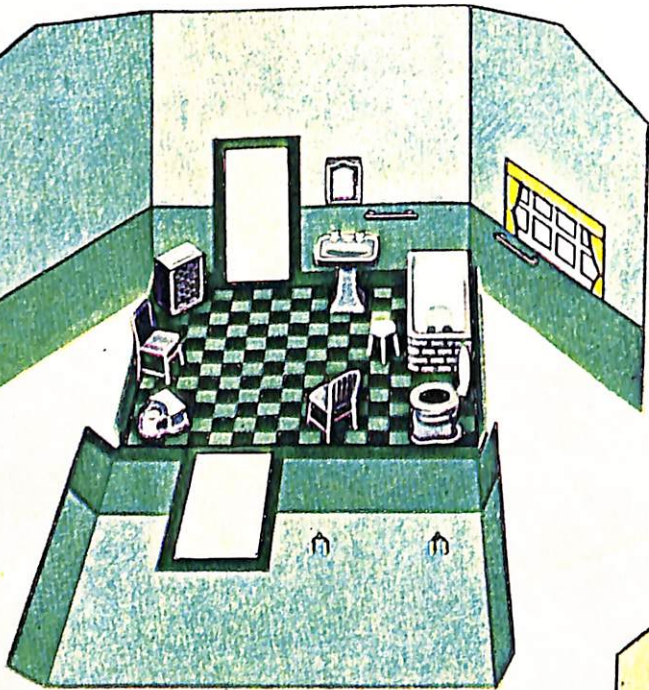
Without change in the attractive boxing ➔

but including the

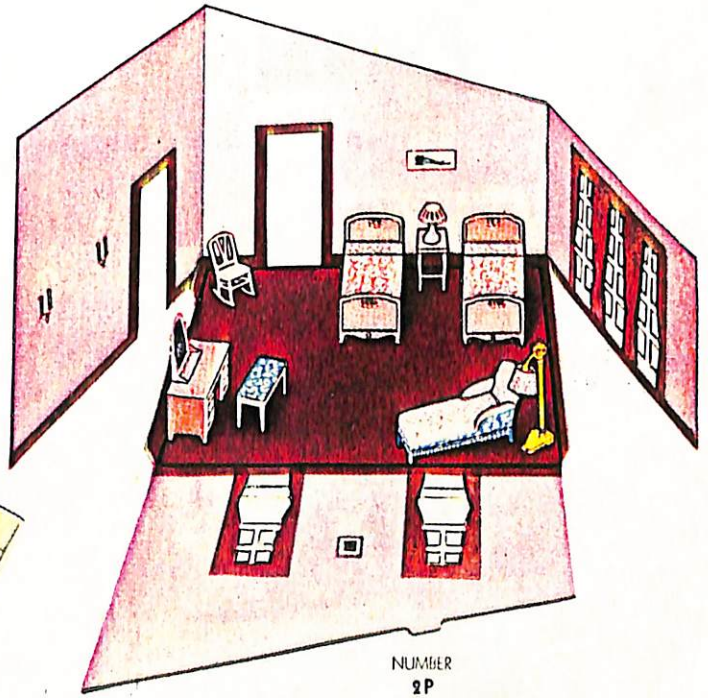
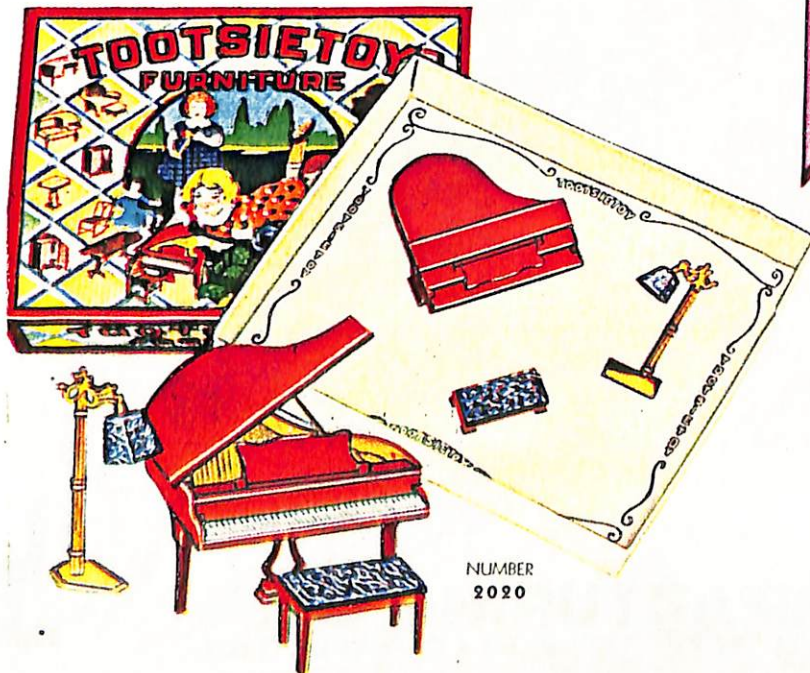
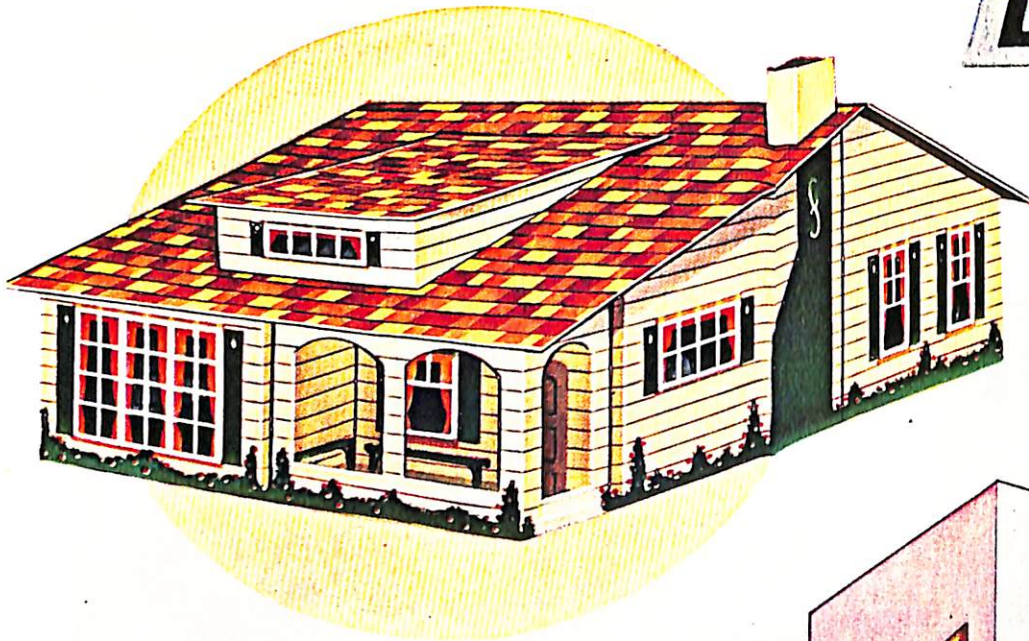
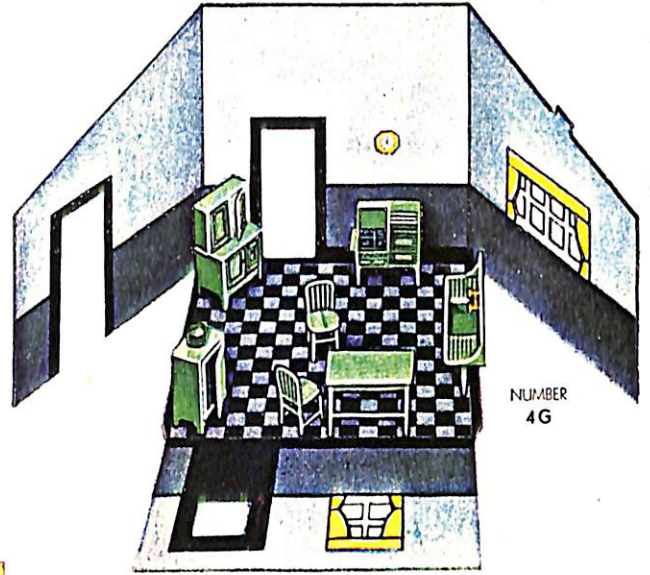
FREE

“ADD-A-ROOM”

DOLL HOUSE ➔



TOOTSIETOYS



TOOTSIETOYS



LIVING ROOM

No. 1

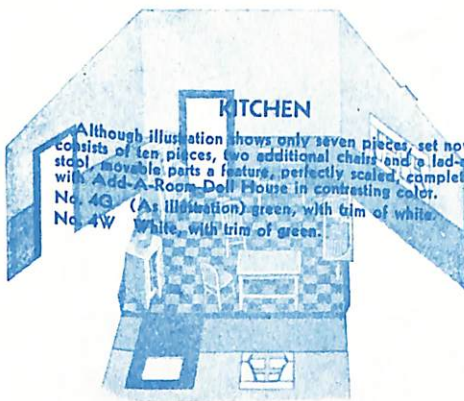
Set consists of ten pieces—realistic-looking, modern designs; davenport, chairs and ottoman in soft felt finish, complete with Add-A-Room Doll House.



PIANO SET

No. 2020

Handsome three piece set of grand piano, bench and floor lamp. Piano keyboard opens, top opens, music rest raises. Colors—gold, mahogany and red.



KITCHEN

Although illustration shows only seven pieces, set now consists of ten pieces, two additional chairs and a ladle-stool, movable parts a feature, perfectly scaled, complete with Add-A-Room Doll House in contrasting color.

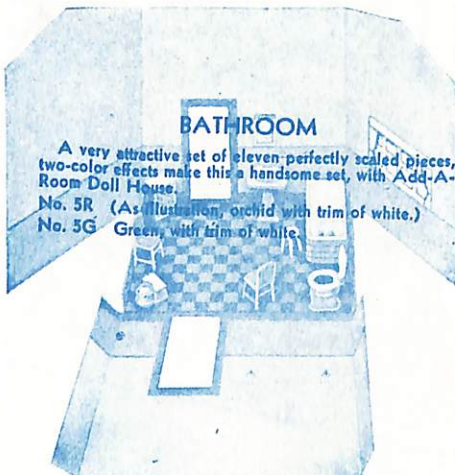
No. 4G (As illustration) green, with trim of white.
No. 4W White, with trim of green.



DINING ROOM

Another ten piece set. Buffet with movable drawers, corner cabinet with glass door that opens; exact duplication of modern life-size Dining Room. Complete with Add-A-Room Doll House.

No. 3A (Maple as illustrated)
No. 3G (Green)



BATHROOM

A very attractive set of eleven perfectly scaled pieces, two-color effects make this a handsome set, with Add-A-Room Doll House.

No. 5R (As illustration) orchid with trim of white.
No. 5G Green, with trim of white.



BEDROOM

Ten pieces of "true-to-life" furniture in delicate colors, movable drawers in dresser, new soft felt finish on upholstered pieces. Add-A-Room Doll House included.

No. 2P (As illustrated)
No. 2B (Blue)

DOWST MANUFACTURING CO.

4533-4541 FULTON ST.

CHICAGO, ILL.

★ JOBBING PERFECTION ★

In this presentation of Tootsietoy packing in assortments we honestly believe we have reached the zenith of perfection for jobbers sale.

You have been faced often with the problem of writing a small order that will contain a sellable assortment.

This packing of Tootsietoy De Luxe Motors and Tootsietoy De Luxe Trucks answers that question. It also provides the small dealer with a dollar package for his sales at that price.

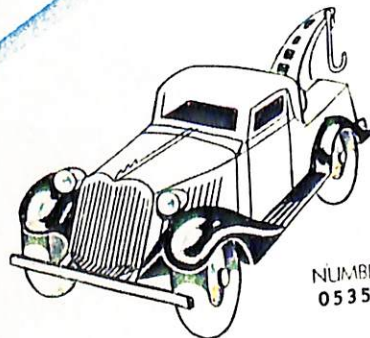
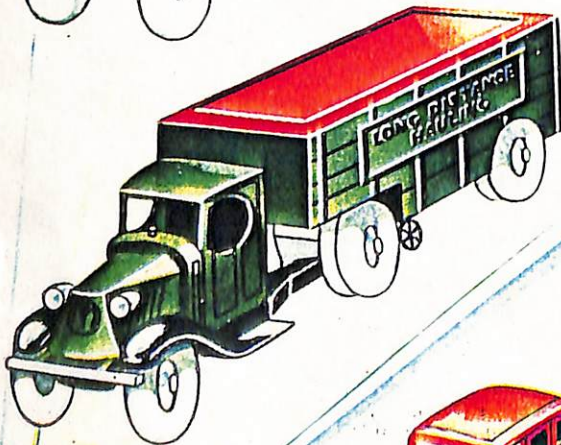
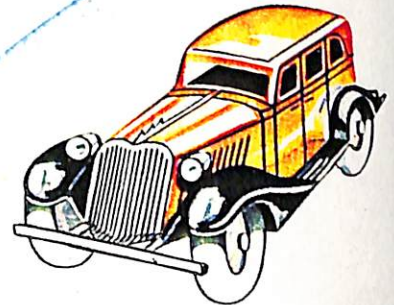
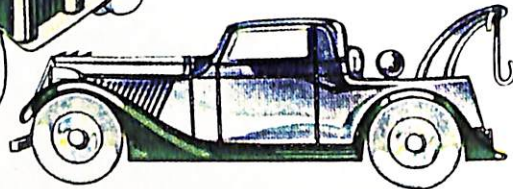
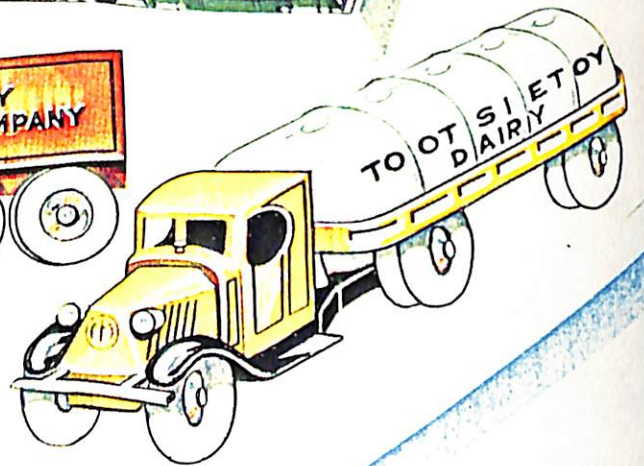
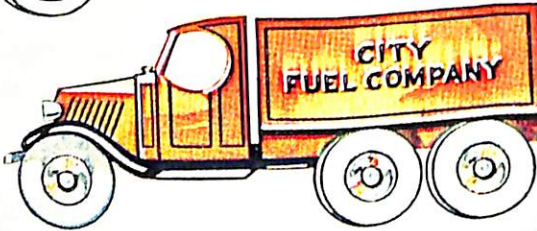
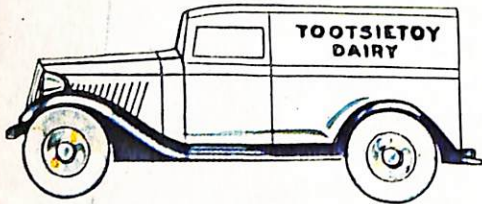
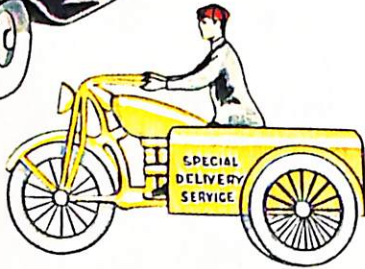
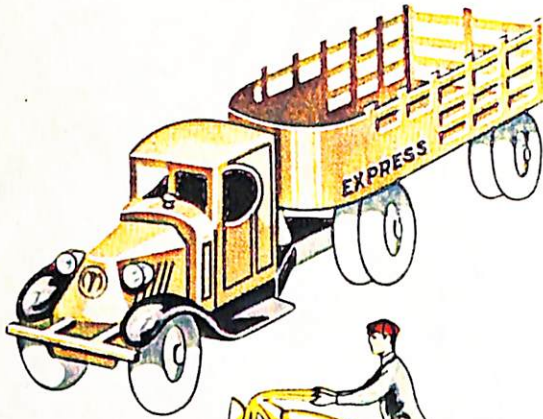
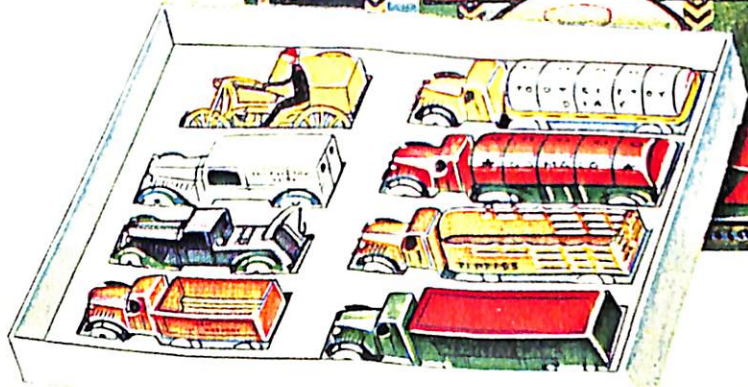
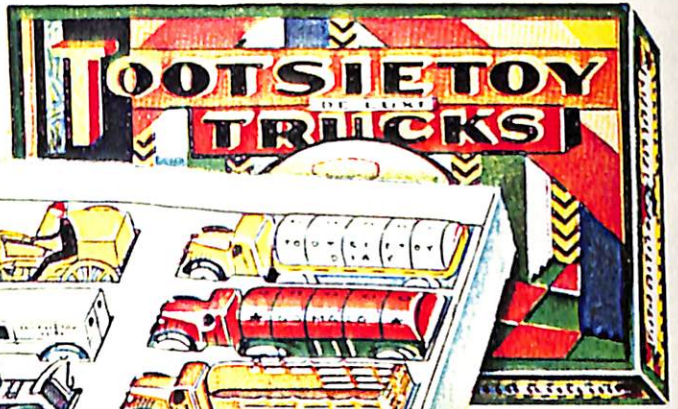
And two of the finest fifty cent items of the year are shown here—one of which likewise has the same possibility of break down sales.

*Ask about counter cards
for these items.*

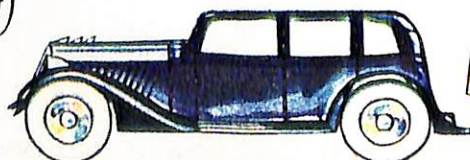
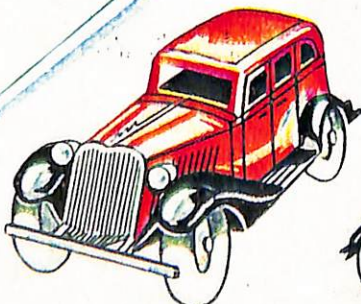
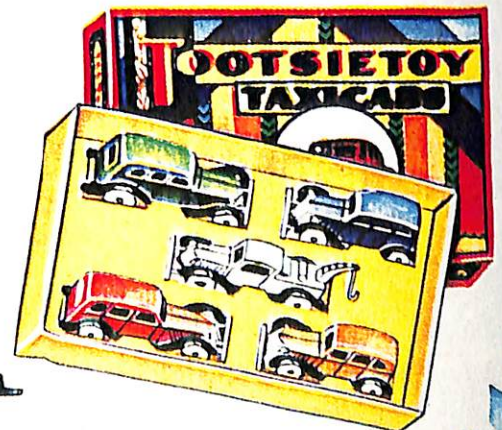


TOOTSIE TOYS

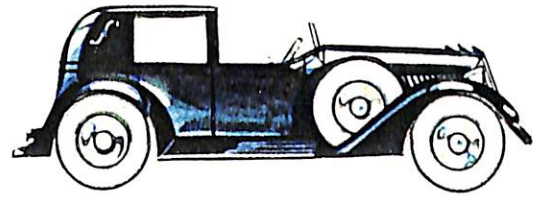
NUMBER
0531X



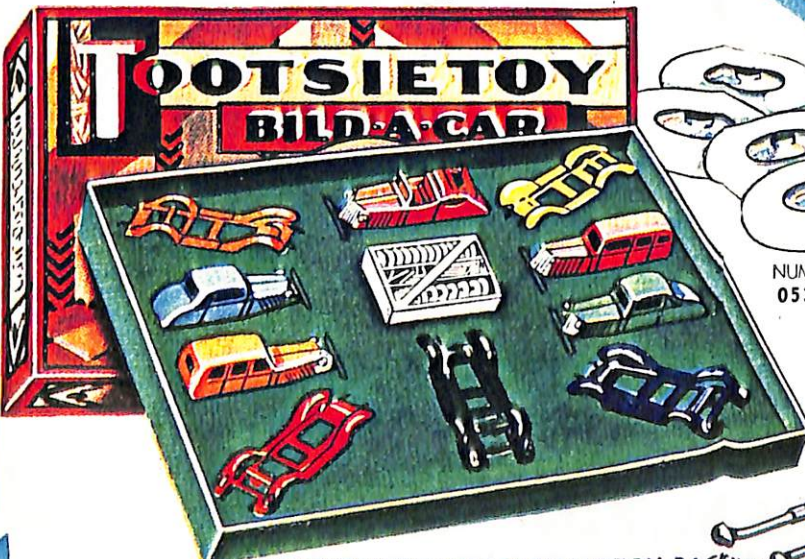
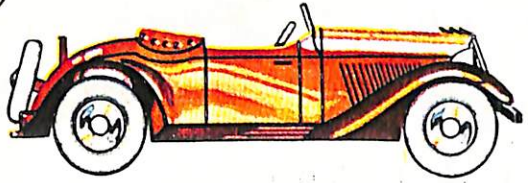
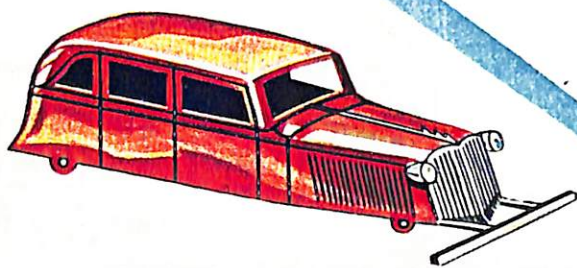
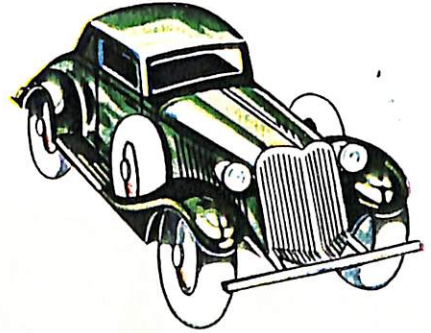
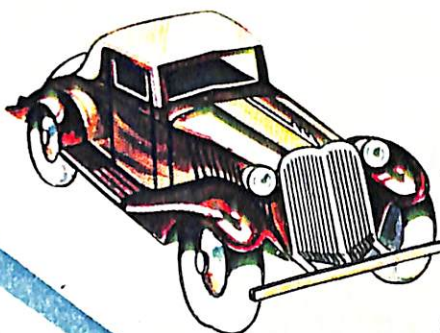
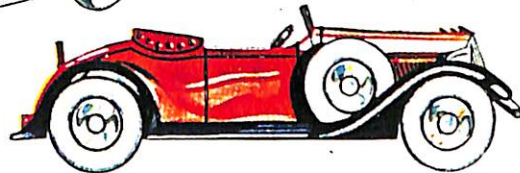
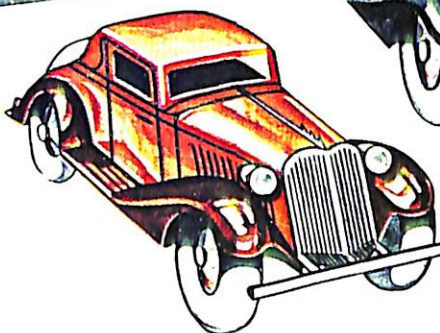
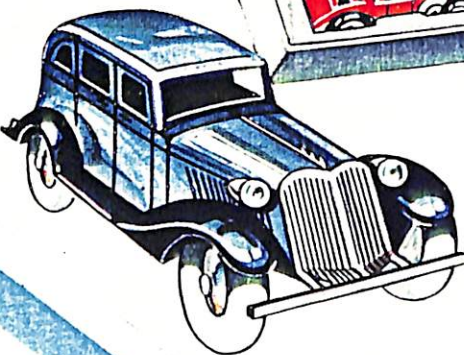
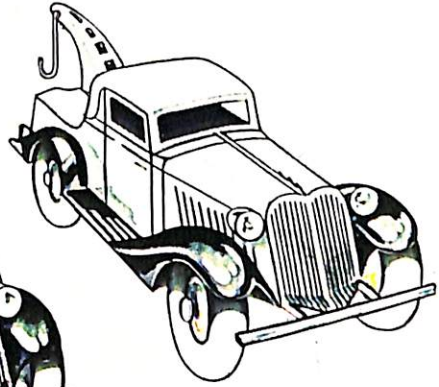
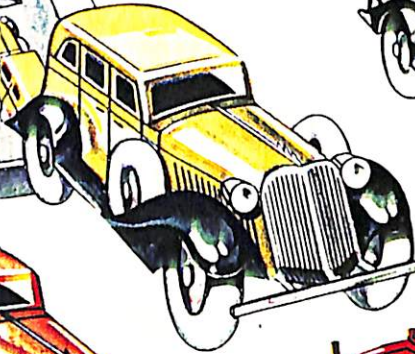
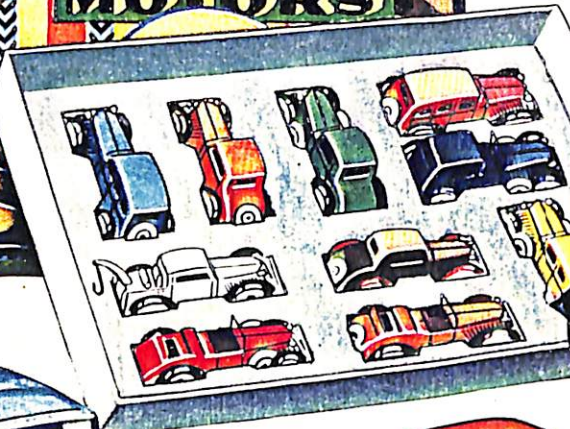
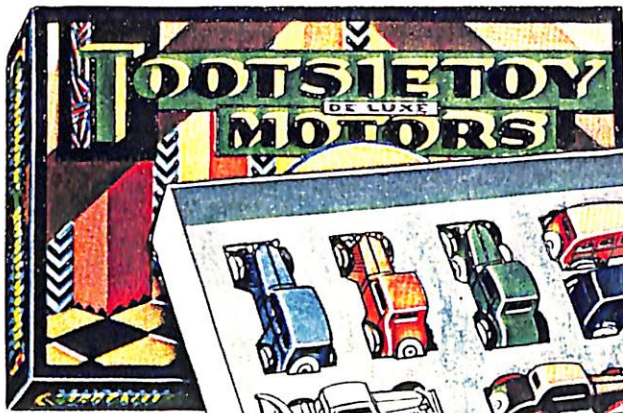
NUMBER
05350



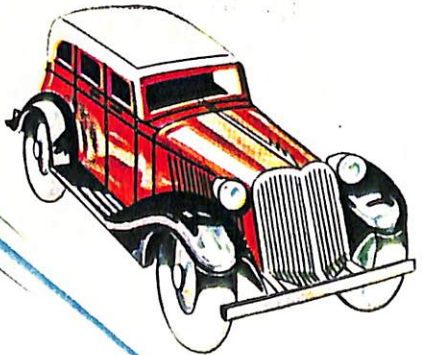
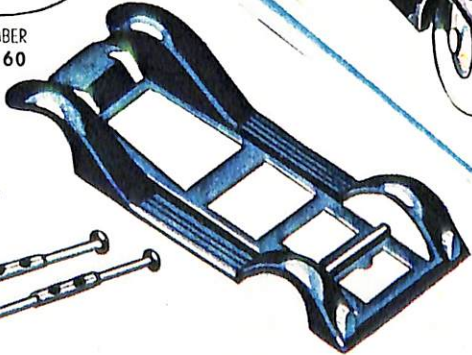
TOOTSIETOYS



NUMBER
0530X

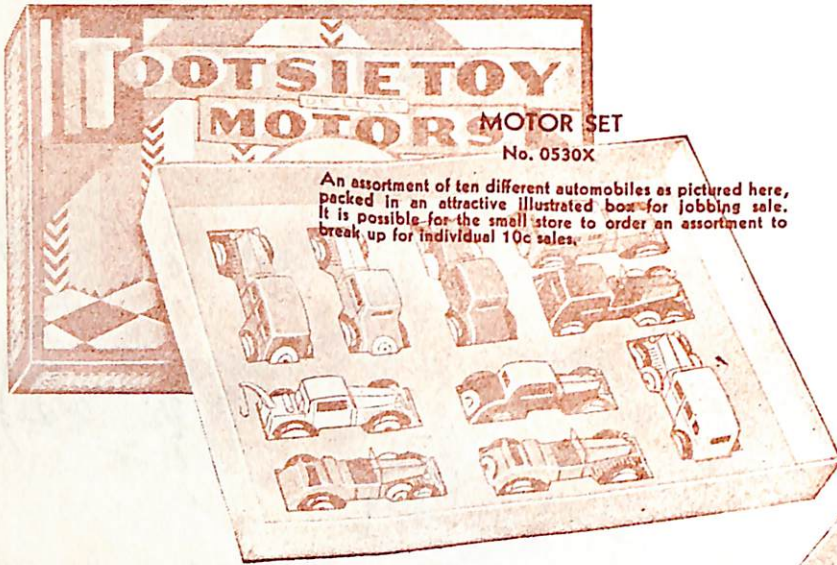


NUMBER
05360



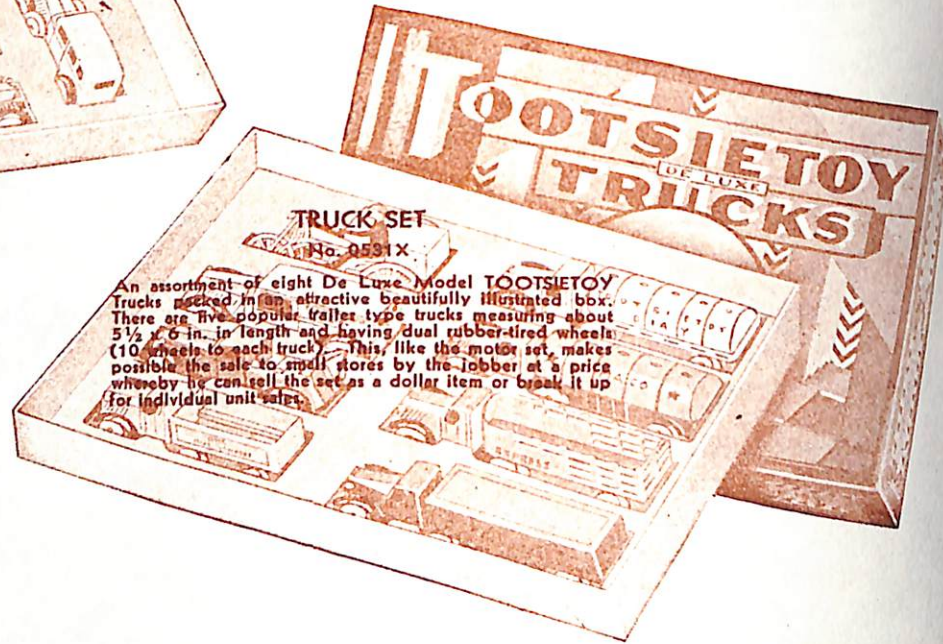
SEE BACK OF THIS PAGE FOR DESCRIPTION, PACKING, WEIGHTS, AND OTHER ESSENTIAL INFORMATION

TOOTSIE TOYS



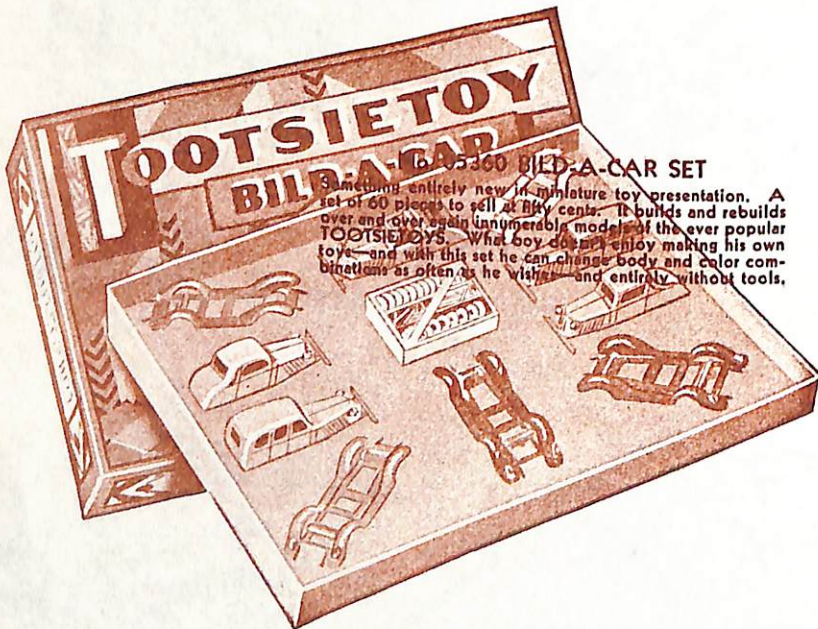
MOTOR SET
No. 0530X

An assortment of ten different automobiles as pictured here, packed in an attractive illustrated box for jobbing sale. It is possible for the small store to order an assortment to break up for individual 10c sales.



TRUCK SET
No. 0531X

An assortment of eight De Luxe Model Tootsie Toy Trucks packed in an attractive beautifully illustrated box. There are five popular trailer type trucks measuring about 5 1/2 x 6 in. in length and having dual rubber-tired wheels (10 wheels to each truck). This, like the motor set, makes possible the sale to small stores by the jobber at a price whereby he can sell the set as a dollar item or break it up for individual unit sales.



BUILD-A-CAR SET
No. 05360

Something entirely new in miniature toy presentation. A set of 60 pieces to sell at fifty cents. It builds and rebuilds over and over again innumerable models of the ever popular Tootsie Toys. What boy doesn't enjoy making his own toys—and with this set he can change body and color combinations as often as he wishes—and entirely without tools.



TAXI SET
No. 05350

Without a doubt the greatest value ever offered in the sales-compelling Tootsie Toy line—the line that always walks right off the counter. Four model taxis and one wrecking truck—all rubber tired—and packed in the usual attractive manner in a brightly colored box with its graphed label. A fifty cent item—priced right.

DOWST MANUFACTURING CO.
4533-4541 FULTON ST. CHICAGO, ILL.

TOOTSIE TOYS

SEDAN

No. 0613

Brilliant enamel colors with nickeled radiator, lamps and bumper. Rubber tires with side mount spare tires. Packed one dozen to box in following colors:
 1 Red and Black, 2 Light Blue and Dark Blue, 2 Light Green and Dark Green, 4 Yellow and Brown.
 Length four inches. Weight per gross 29 pounds.

ROADSTER

No. 0611

Finished in bright enamel with nickeled windshield, radiator, lamps and bumper. Rubber tires with dual side mounts. Packed one dozen to box as follows:
 6 Red and Black, 2 Light Blue and Dark Blue, 2 Light Green and Dark Green, 2 Yellow and Brown.
 Length four inches. Weight per gross 31 pounds.

CONVERTIBLE SEDAN

No. 0615

Large color enamel finish with nickeled radiator, lamps and bumper. Rubber tired wheels with side mounted spare. Packed one dozen to box as follows:
 4 Red, Black and Khaki, 2 Lt. and Dk. Blue and Khaki, 2 Lt. and Dk. Brown and Khaki, 4 Green, Red and Khaki.
 Length four inches. Weight per gross 29 pounds.

Intro-
 ducing a new
 era in TOOTSIE-
 TOY construction. The
 toys shown on this and the op-
 posite side of this page are as true
 representations of modern automobiles as it
 is possible to produce. These pictures are from
 actual photographs of the toys themselves.
 A new alloy is used in the making of
 these toys—forty per cent lighter
 but possessing four to five
 times the tensile
 strength of the
 old.

CONVERTIBLE COUPE

No. 0514

Finished in bright enamel colors with nickeled radiator, lamps and bumper. Rubber tires with rear mount spare. Packed one dozen to box as follows:
 4 Red, Black and Khaki, 2 Lt. Blue, Dk. Blue and Khaki, 2 Lt. Brown, Dk. Brown and Khaki, 4 Green, Red and Khaki.
 Length four inches. Weight per gross 25 pounds.

COUPE

No. 0512

Finished in bright enamel colors with nickel plated radiator, lamps and bumper. Rubber tires with rear mount spare. Packed one dozen to box as follows:
 4 Red and Black, 2 Light Blue and Dark Blue, 2 Light Green and Dark Green, 4 Yellow and Brown.
 Length four inches. Weight per gross 25 pounds.

TOWN CAR

No. 0516

Brilliant enamel colors with nickeled windshield, radiator, lamps and bumper. Rubber tires with rear mount spare. Packed one dozen to box as follows:
 6 Red and Black, 3 Blue with darker blue fenders, 3 Green with darker green fenders.
 Length four inches. Weight per gross 29 pounds.

CONVERTIBLE COUPE

No. 0614

Three color enamel finish with rubber tires and two side mount spares. Nickeled radiator, lamps and bumper. Packed one dozen to box as follows:
 4 Red, Black and Khaki, 2 Lt. Blue, Dk. Blue and Khaki, 2 Lt. Brown, Dk. Brown and Khaki, 4 Green, Red and Khaki.
 Length four inches. Weight per gross 27 pounds.

COUPE

No. 0612

Bright enamel colors with nickeled radiator, lamps and bumper. Rubber tires with dual rubber tired side mounts. Packed one dozen to box as follows:
 4 Red and Black, 2 Light Blue and Dark Blue, 2 Light Green and Dark Green, 4 Yellow and Brown.
 Length four inches. Weight per gross 27 pounds.

TOWN CAR

No. 0616

Finished in bright enamel colors with nickeled windshield, radiator, lamps and bumper. Rubber tires with dual side mount spares. One dozen to box:
 6 Red and Black, 3 Blue with darker blue fenders, 3 Green with darker green fenders.
 Length four inches. Weight per gross 31 pounds.

SEDAN

No. 0513

Finished in brilliant enamel with nickel plated radiator, lamps and bumper. Rubber tires with rear mount spare. Packed one dozen to box as follows:
 4 Red and Black, 2 Light Blue and Dark Blue, 2 Light Green and Dark Green, 4 Yellow and Brown.
 Length four inches. Weight per gross 27 pounds.

CONVERTIBLE SEDAN

No. 0515

Three color enamel finish with nickel plated radiator, lamps and bumper. Rubber tires with rear mount spare. Packed one dozen assorted:
 Red, Black and Khaki, 2 Lt. and Dk. Blue and Khaki, 2 Lt. and Dk. Brown and Khaki, 4 Green, Red and Khaki.
 Length four inches. Weight per gross 27 pounds.

ROADSTER

No. 0511

Bright enamel colors with nickel plated windshield, radiator, lamps and bumper. Packed one dozen to box. Rubber tires with rear mounted spare wheel and tire.
 6 Red and Black, 2 Light Blue and Dark Blue, 2 Light Green and Dark Green, 2 Yellow and Brown.
 Length four inches. Weight per gross 29 pounds.

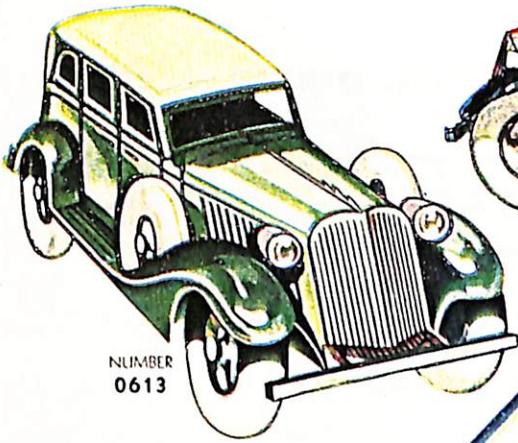
NOTE: In color specifications above, the first color mentioned refers to body color and the second to fenders. Thus, "Red and Black" means Red body and Black fenders, etc.

DOWST MANUFACTURING CO.

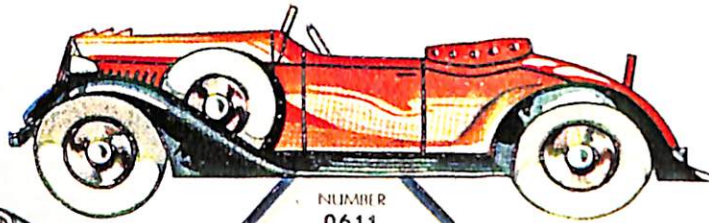
4533-4541 FULTON ST.

CHICAGO, ILL.

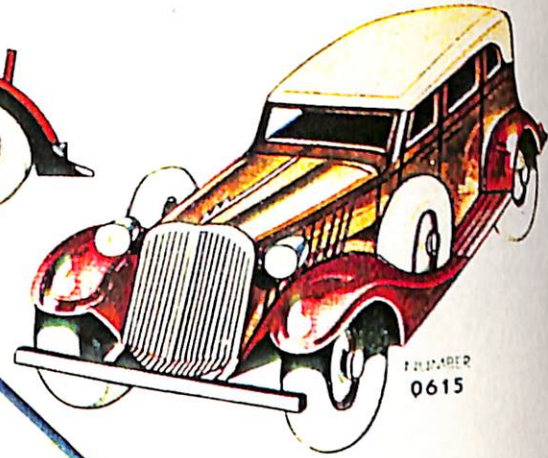
TOOTSIETOYS



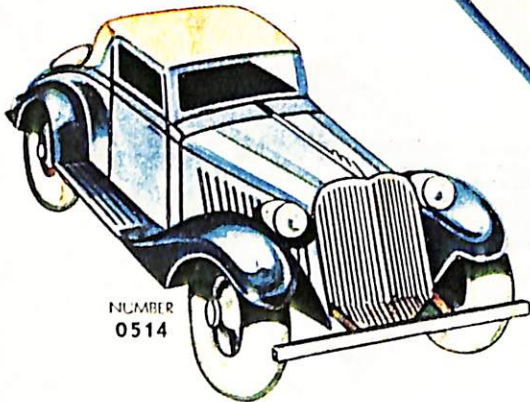
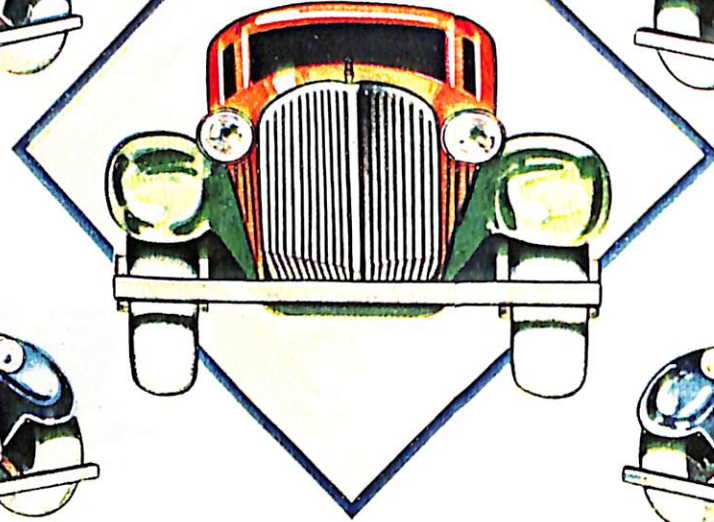
NUMBER
0613



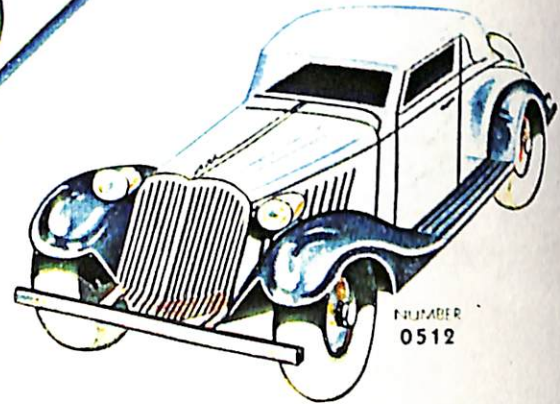
NUMBER
0611



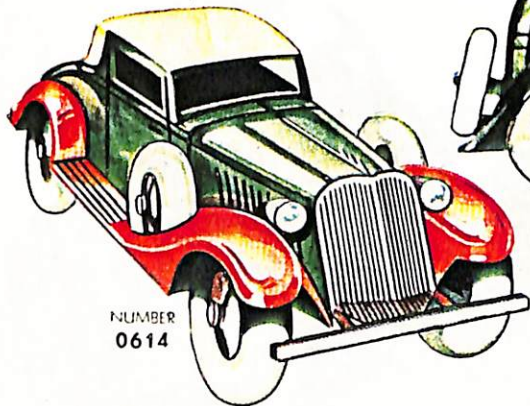
NUMBER
0615



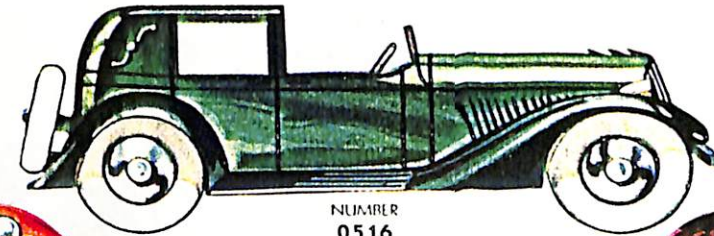
NUMBER
0514



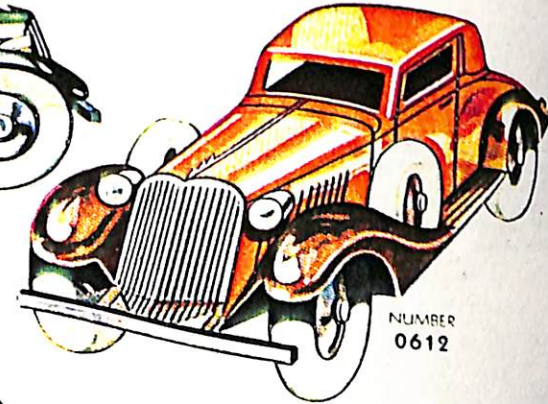
NUMBER
0512



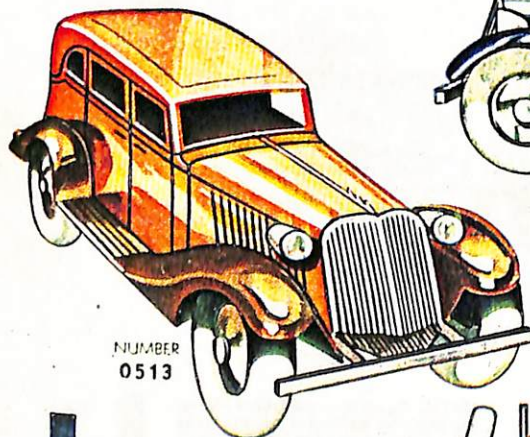
NUMBER
0614



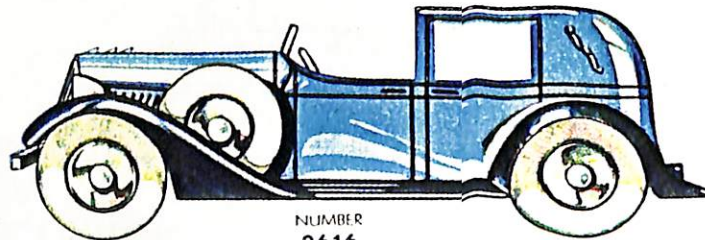
NUMBER
0516



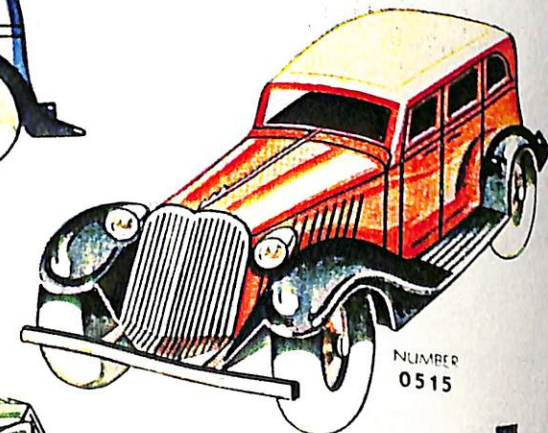
NUMBER
0612



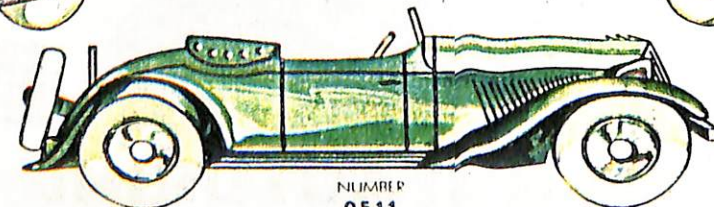
NUMBER
0513



NUMBER
0616



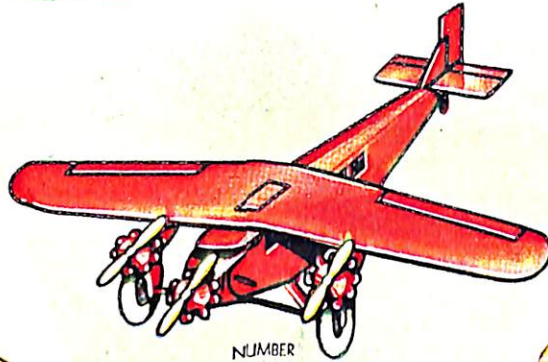
NUMBER
0515



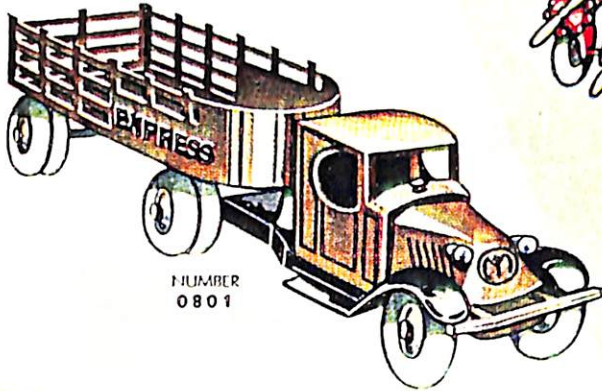
NUMBER
0511

SEE BACK OF THIS PAGE FOR DESCRIPTION, PACKING, WEIGHTS, AND OTHER ESSENTIAL INFORMATION

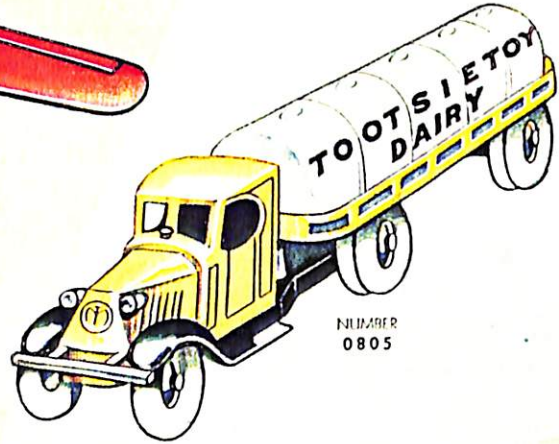
TOOTSIETOYS



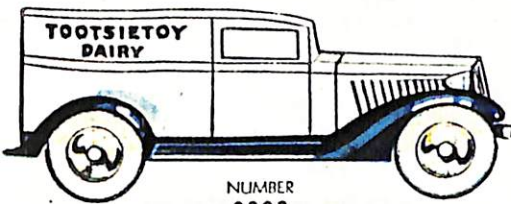
NUMBER
04649



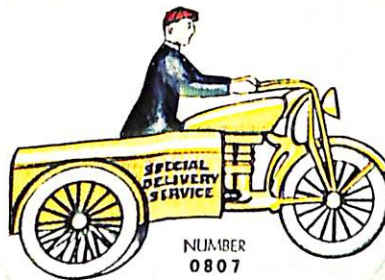
NUMBER
0801



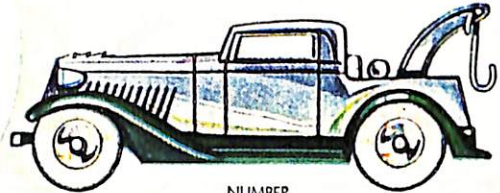
NUMBER
0805



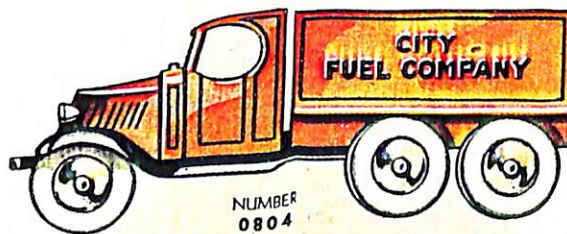
NUMBER
0808



NUMBER
0807



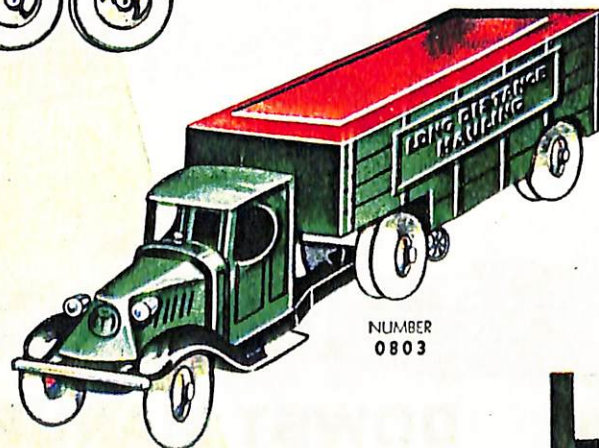
NUMBER
0806



NUMBER
0804



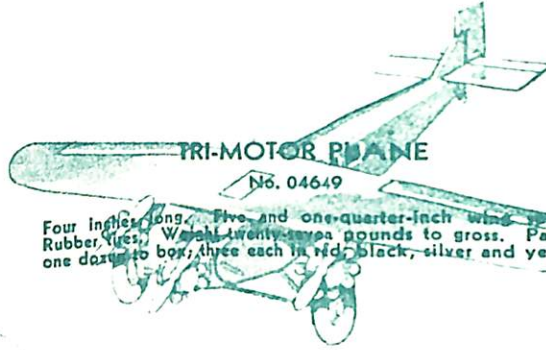
NUMBER
0802



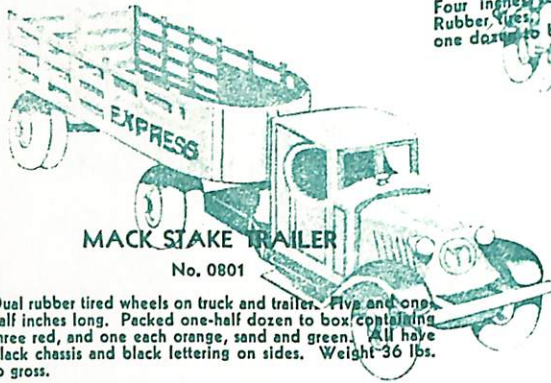
NUMBER
0803

SEE BACK OF THIS PAGE FOR DESCRIPTION, PACKING,
WEIGHTS, AND OTHER ESSENTIAL INFORMATION

TOOTSIE TOYS



TRI-MOTOR PLANE
No. 04649
Four inches long. Five and one-quarter inch wing span. Rubber tires. Weight twenty-seven pounds to gross. Packed one dozen to box, three each in red, black, silver and yellow.



MACK STAKE TRAILER
No. 0801

Dual rubber tired wheels on truck and trailer. Five and one-half inches long. Packed one-half dozen to box containing three red, and one each orange, sand and green. All have black chassis and black lettering on sides. Weight 36 lbs. to gross.



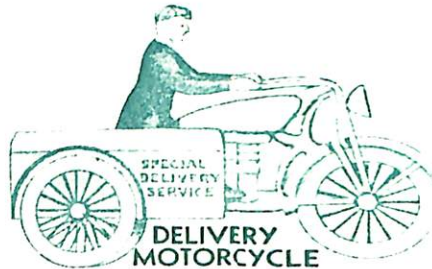
MACK MILK-TRAILER
No. 0805

Dual rubber tired wheels. Five and three-quarters inches long. Packed one-half dozen to box of two each red and yellow and one each green and sand color. All have black chassis with white tank and black lettering. Weight 32 lbs. to gross.



MILK DELIVERY CAR
No. 0808

Rubber tired. Length four inches. Packed one dozen to box all white with black chassis and black lettering on sides. Weight 27 pounds to the gross.



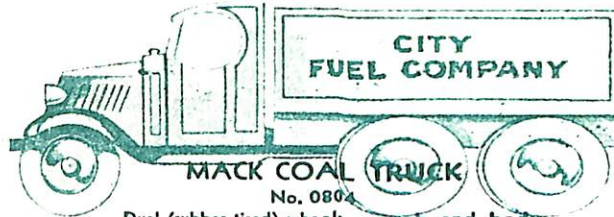
DELIVERY MOTORCYCLE
No. 0807

Box side (opens) delivery cycle like that used for small package delivery by many business houses. Packed one dozen to box six red and three each yellow and green. Wheels silver and driver in natural colors (hand finished). Weight 24 lbs. to gr.



WRECKING CAR
No. 0806

Rubber tired. Length four inches. Packed one dozen to box of six white, three each red and yellow. All black chassis. Weight 23 pounds to gross. Nickered radiator, lamps and bumper.



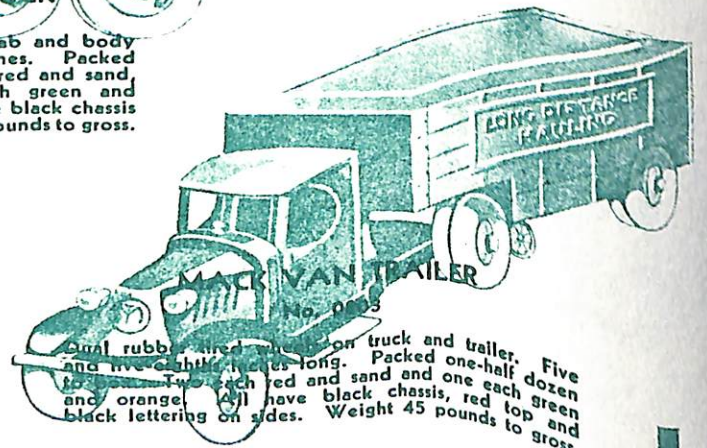
MACK COAL TRUCK
No. 0804

Dual (rubber tired) wheels on cab and body—ten wheels. Length four inches. Packed one-half dozen to box two each red and sand, sand and orange, and one each green and red, orange and green. All have black chassis and black lettering. Weight 36 pounds to gross.



MACK OIL TRAILER
No. 0802

Dual wheels on truck and trailer. Five and five-eighths inches long. Packed one-half dozen to box. Two each red cab and trailer with green tank, and sand and red, and one each green cab and trailer with red tank and orange cab and trailer with green tank. All have black chassis and black letters. Weight 36 pounds to gross.



MACK VAN TRAILER
No. 0803

Dual rubber tired wheels on truck and trailer. Five and five-eighths inches long. Packed one-half dozen to box. Two each red and sand and one each green and orange. All have black chassis, red top and black lettering on sides. Weight 45 pounds to gross.

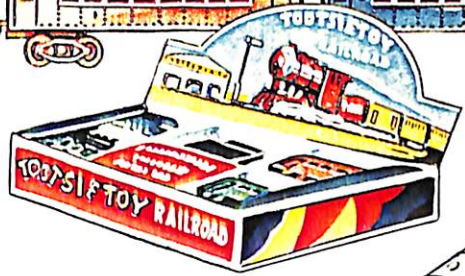
DOWST MANUFACTURING CO.
4533-4541 FULTON ST. CHICAGO, ILL.



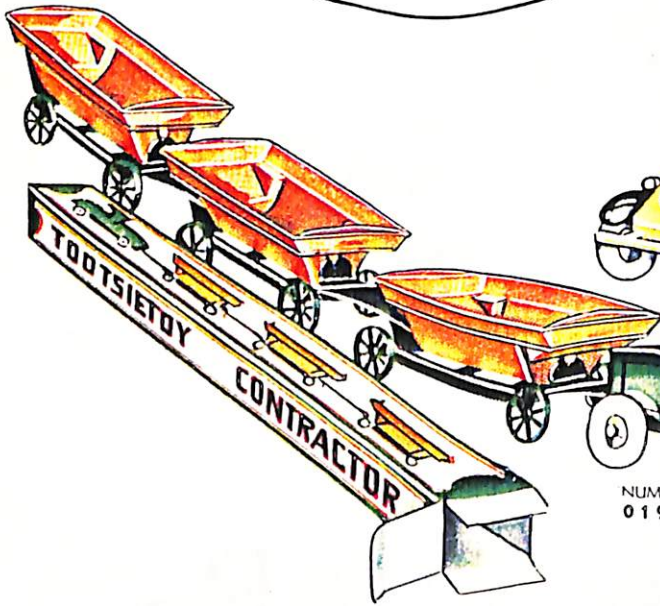
TOOTSIETOYS



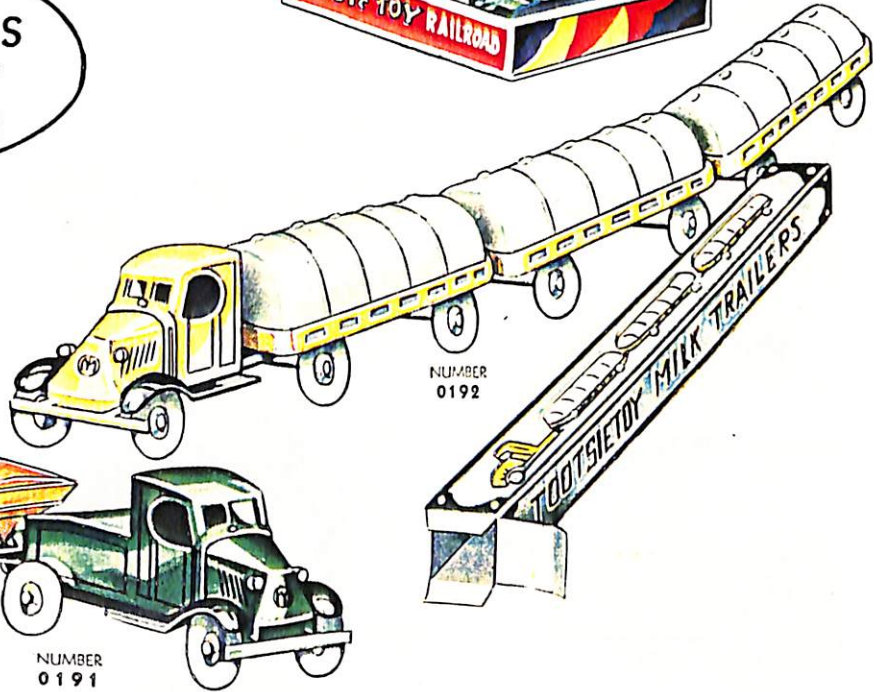
NUMBER
193



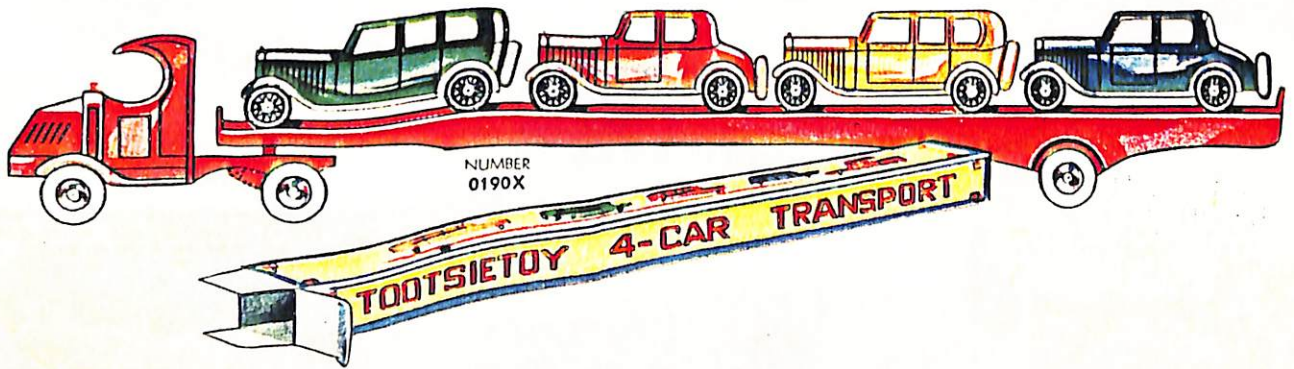
FIVE
OF THE YEAR'S
"HOTTEST"
25c NUMBERS



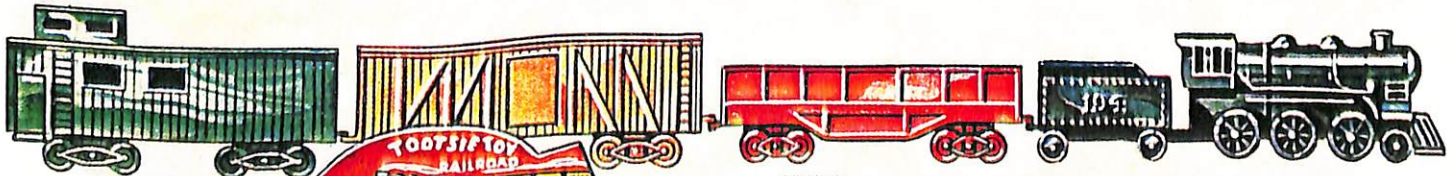
NUMBER
0191



NUMBER
0192



NUMBER
0190X



NUMBER
194



SEE BACK OF THIS PAGE FOR DESCRIPTION, PACKING,
WEIGHTS, AND OTHER ESSENTIAL INFORMATION

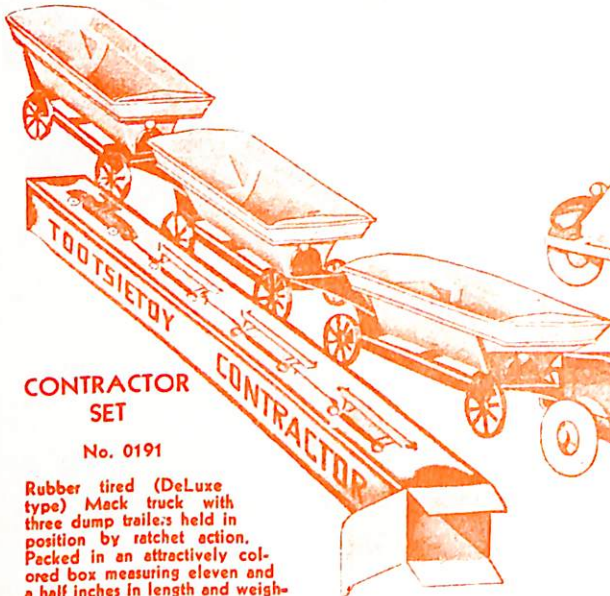
TOOTSIETOYS



PASSENGER TRAIN

No. 193

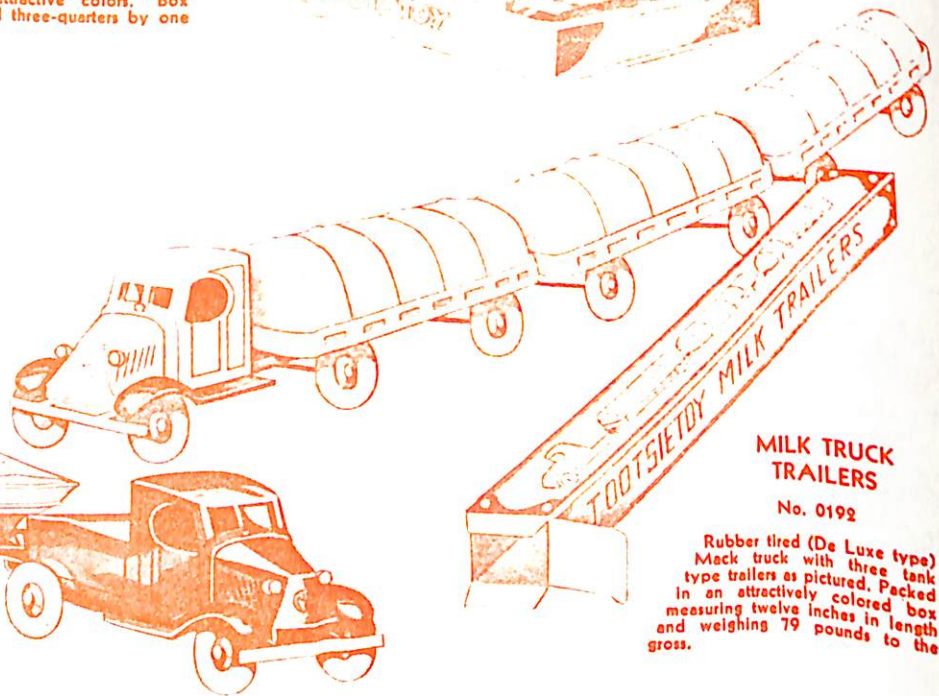
Five piece train set packed in a colorful, folding box with stick-up counter display cover. Locomotive, tender, baggage car, pullman and observation car with couplers and in attractive colors. Box measures eight and three-quarters by two and three-quarters by one inch, and weighs 90 pounds to the gross.



CONTRACTOR SET

No. 0191

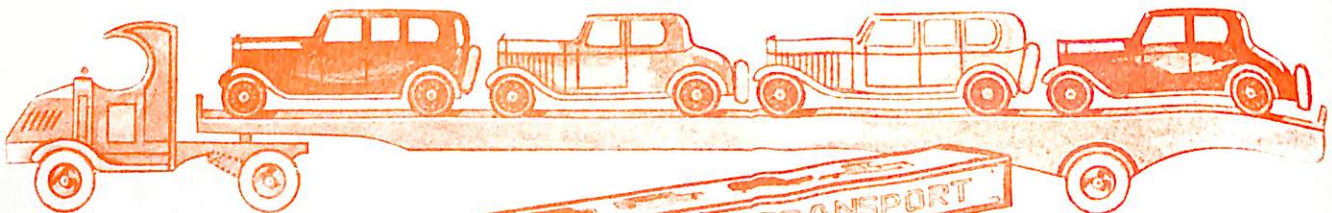
Rubber tired (DeLuxe type) Mack truck with three dump trailers held in position by ratchet action. Packed in an attractively colored box measuring eleven and a half inches in length and weighing 70 pounds to the gross.



MILK TRUCK TRAILERS

No. 0192

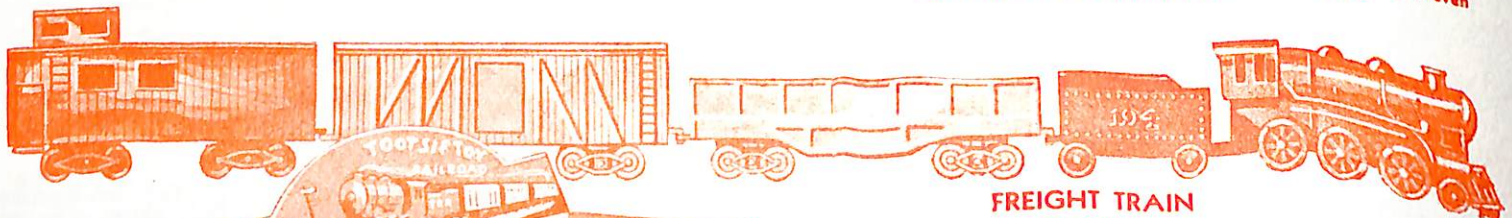
Rubber tired (DeLuxe type) Mack truck with three tank type trailers as pictured. Packed in an attractively colored box measuring twelve inches in length and weighing 79 pounds to the gross.



FORCAR TRANSPORT

No. 0190X

Rubber tired Mack truck and trailer with four miniature automobiles mounted on trailer. Packed in individual box measuring eleven inches in length and weighing 90 pounds to the gross.



FREIGHT TRAIN

No. 194

Five piece freight train set as a companion piece to the one pictured at top of this page. Locomotive, tender, box car, gondola car and caboose with couplers and attractively colored. Box for size and construction is similar to the Passenger Set but colored differently. Weight 100 pounds to the gross.

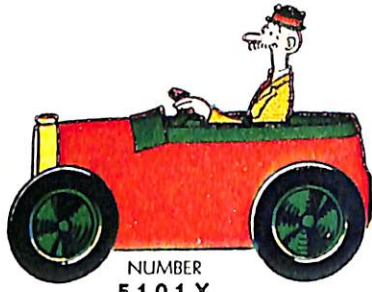


DOWST MANUFACTURING CO.

4533-4541 FULTON ST.

CHICAGO, ILL.

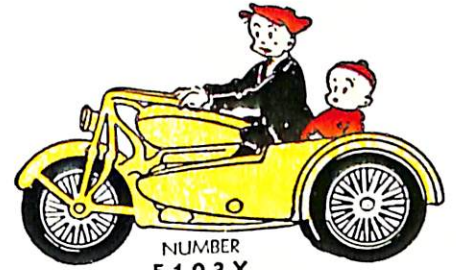
TOOTSIETOYS



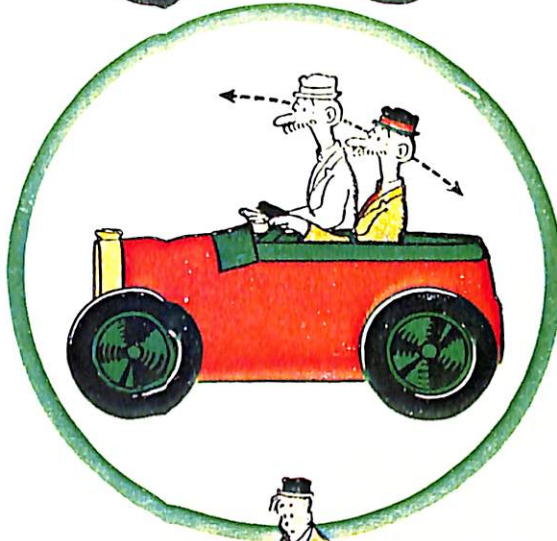
NUMBER
5101X



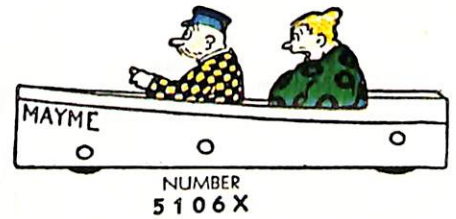
NUMBER
5104X



NUMBER
5103X



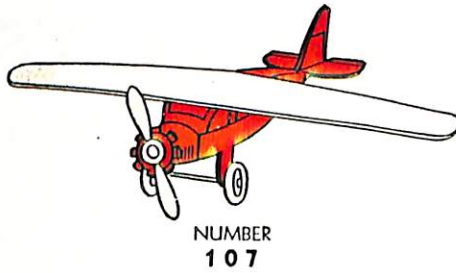
NUMBER
5105X



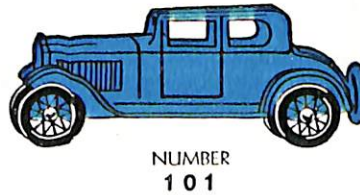
NUMBER
5106X



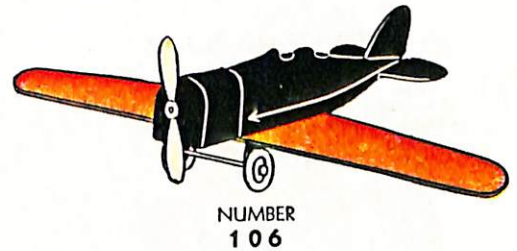
NUMBER
5102X



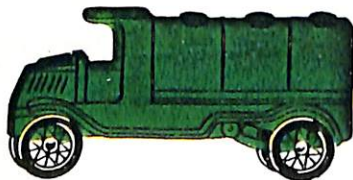
NUMBER
107



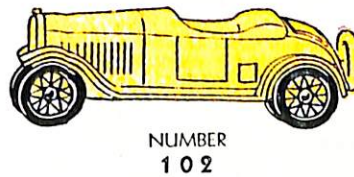
NUMBER
101



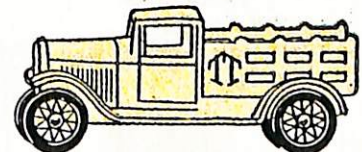
NUMBER
106



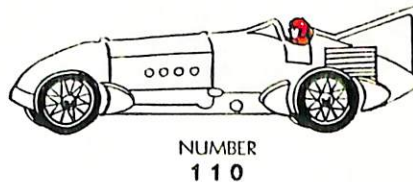
NUMBER
105



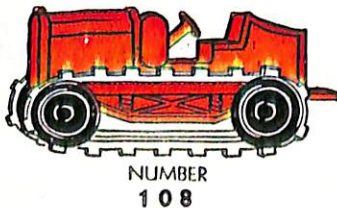
NUMBER
102



NUMBER
109



NUMBER
110



NUMBER
108

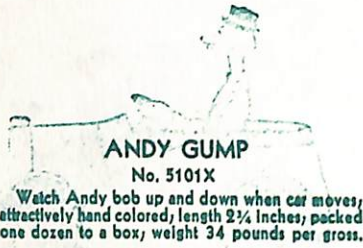


NUMBER
103



NUMBER
104

TOOTSIETOYS



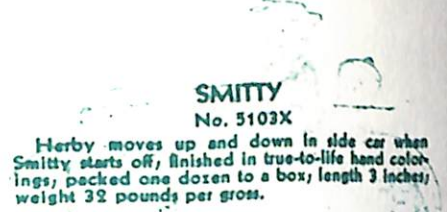
ANDY GUMP
No. 5101X

Watch Andy bob up and down when car moves, attractively hand colored, length 2 1/4 inches, packed one dozen to a box, weight 34 pounds per gross.



MOON MULLINS
No. 5104X

In patrol wagon finished in a four color combination, like other comics, Moon moves as car moves. Packed one dozen to a box, weight 31 pounds per gross, length 3 inches.



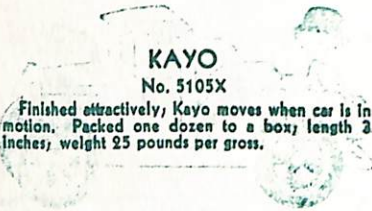
SMITTY
No. 5103X

Herby moves up and down in side car when Smitty starts off, finished in true-to-life hand colorings, packed one dozen to a box, length 3 inches, weight 32 pounds per gross.



UNCLE WALT
No. 5102X

In roadster handsomely finished in four color combination, character moves when car is in motion, length 3 1/4 inches, weight 30 pounds per gross, packed one dozen to a box.



KAYO
No. 5105X

Finished attractively, Kayo moves when car is in motion. Packed one dozen to a box, length 3 inches, weight 25 pounds per gross.



UNCLE WILLIE
No. 5106X

And Mamie, funniest pair in comics, as boat moves characters move, attractively colored. Packed one dozen to a box, weight 25 pounds per gross, length 3 1/4 inches.



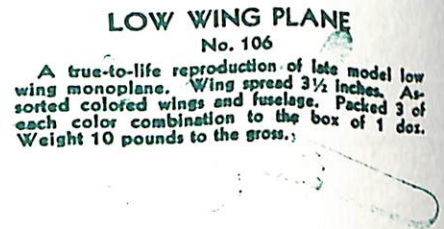
TOP WING PLANE
No. 107

Latest model 3 1/2 inch wing spread. Three each of four different color assortments to the box of 1 dozen. Weight 10 pounds to the gross.



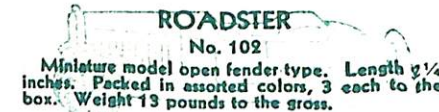
COUPE
No. 101

Open fender type latest model coupe. Length 2 1/4 inches. Packed in assorted colors, 3 each to the box. Weight 13 pounds to the gross.



LOW WING PLANE
No. 106

A true-to-life reproduction of late model low wing monoplane. Wing spread 3 1/2 inches. Assorted colored wings and fuselage. Packed 3 of each color combination to the box of 1 doz. Weight 10 pounds to the gross.



ROADSTER
No. 102

Miniature model open fender type. Length 2 1/4 inches. Packed in assorted colors, 3 each to the box. Weight 13 pounds to the gross.



TANK CAR
No. 105

Length 2 1/4 inches. Reproduced in accurate detail. Packed in 4 assorted colors to the box of 1 doz. Weight 14 pounds to the gross.



STAKE TRUCK
No. 109

Sturdily built heavy duty stake truck. Length 2 1/4 inches. Packed 4 assorted colors to the box of 1 doz. Weight 13 pounds to the gross.



RACER
No. 110

Exact reproduction of latest type racer. Length 2 1/4 inches. Finished in red, blue, green and yellow. Packed 1 doz. to the box. Weight 12 pounds to the gross.



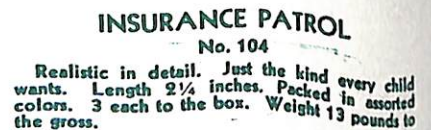
CATERPILLAR TRACTOR
No. 108

Miniature model caterpillar tractor with flexible bands over wheels. Length 2 inches. Packed in assorted colors, 3 each to the box. Weight 10 pounds to the gross.



SEDAN
No. 103

Open fender type sedan. New low type body. Length 2 1/4 inches. Packed in assorted colors 3 each to the box. Weight 13 pounds to the gross.



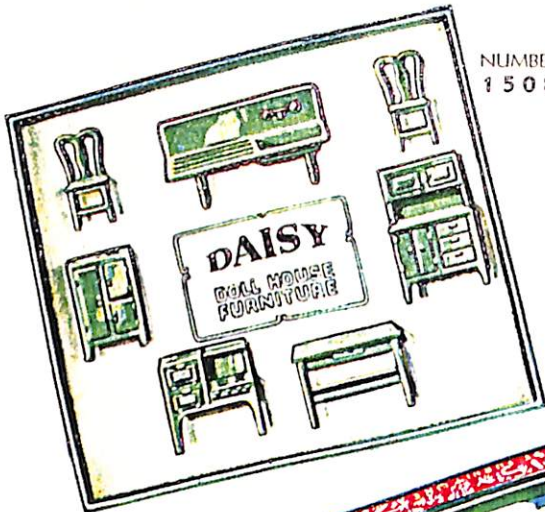
INSURANCE PATROL
No. 104

Realistic in detail. Just the kind every child wants. Length 2 1/4 inches. Packed in assorted colors. 3 each to the box. Weight 13 pounds to the gross.

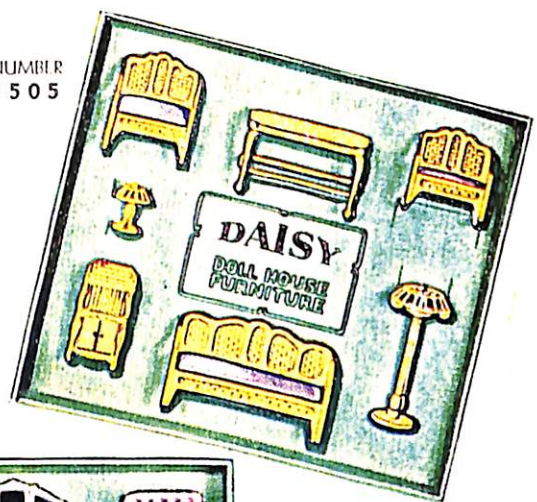


DOWST MANUFACTURING CO.
4533-4541 FULTON ST. CHICAGO, ILL.

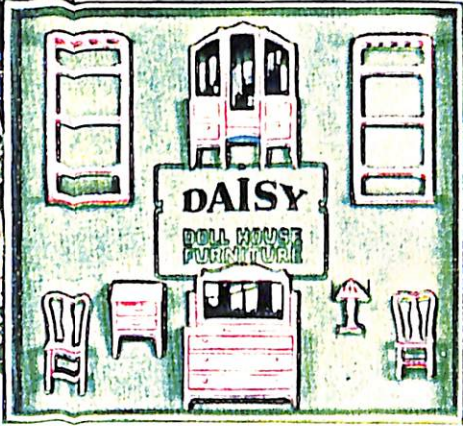
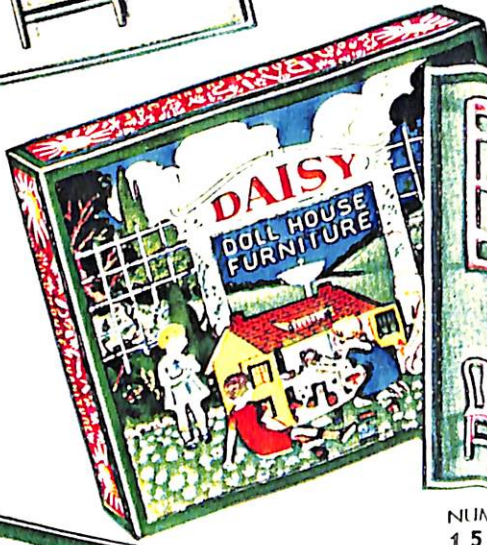
TOOTSIE TOYS



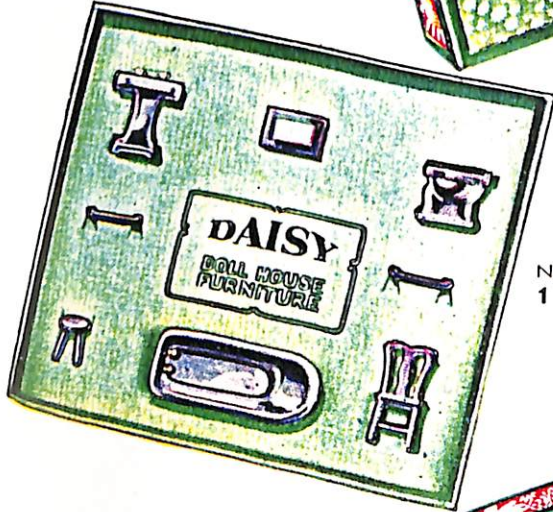
NUMBER 1508



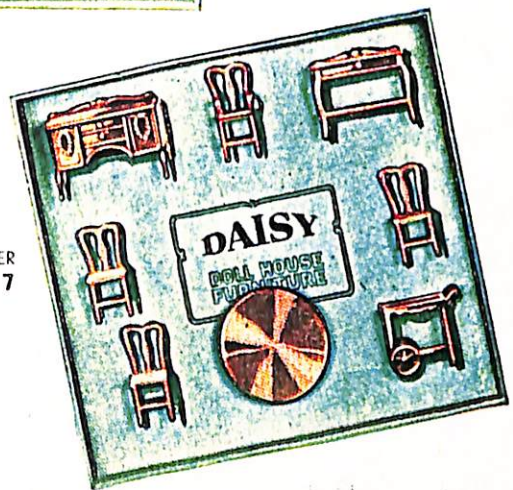
NUMBER 1505



NUMBER 1506



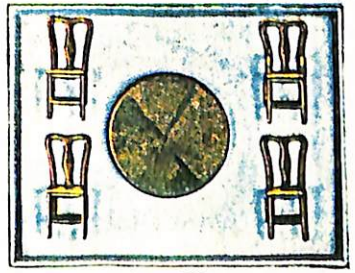
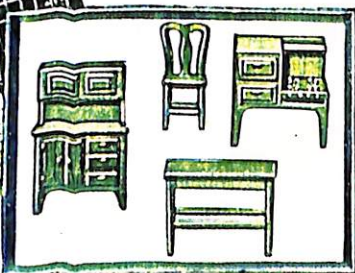
NUMBER 1509



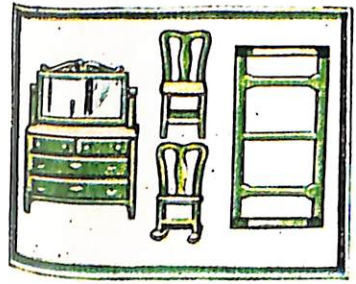
NUMBER 1507



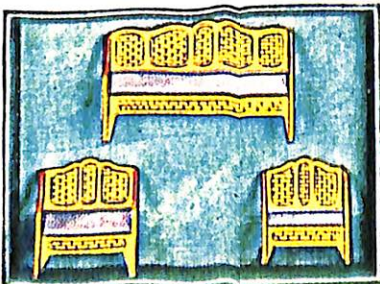
NUMBER 2004



NUMBER 2003



NUMBER 2002



NUMBER 2001

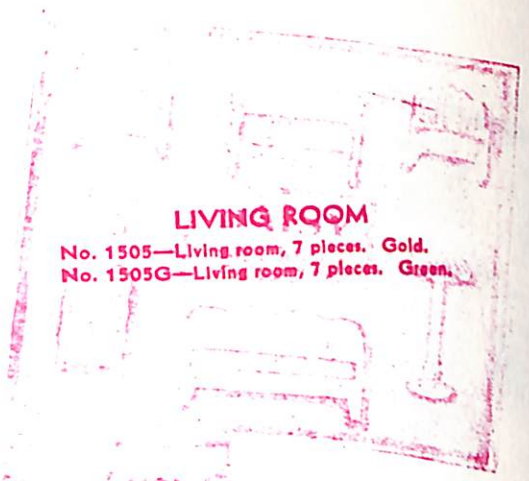
SEE BACK OF THIS PAGE FOR DESCRIPTION, PACKING, WEIGHTS, AND OTHER ESSENTIAL INFORMATION

TOOTSIE TOYS



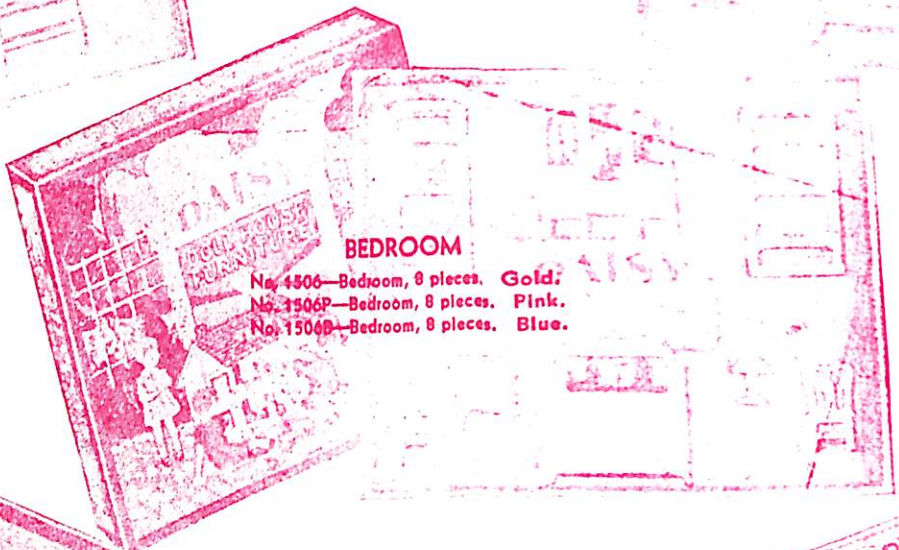
KITCHEN

No. 1508—Kitchen, 7 pieces. White.
No. 1508G—Kitchen, 7 pieces. Green.



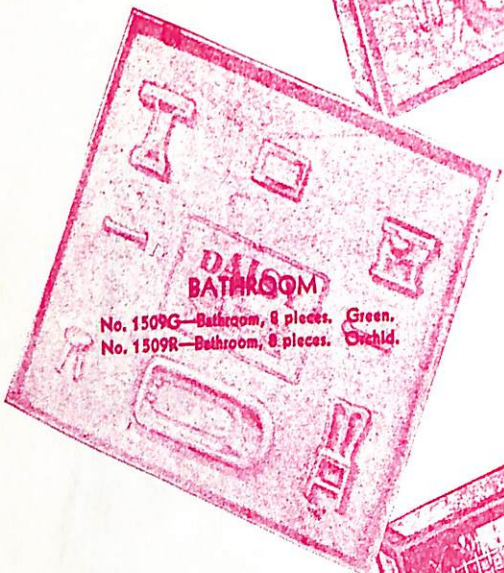
LIVING ROOM

No. 1505—Living room, 7 pieces. Gold.
No. 1505G—Living room, 7 pieces. Green.



BEDROOM

No. 1506—Bedroom, 8 pieces. Gold.
No. 1506P—Bedroom, 8 pieces. Pink.
No. 1506B—Bedroom, 8 pieces. Blue.



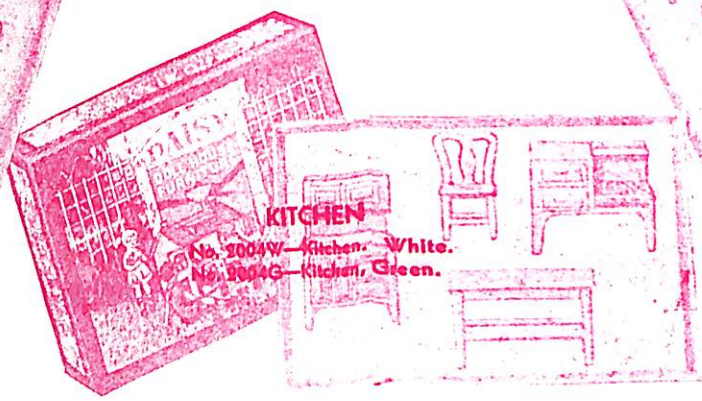
BATHROOM

No. 1509G—Bathroom, 8 pieces. Green.
No. 1509R—Bathroom, 8 pieces. Child.



DINING ROOM

No. 1507A—Dining Room, 8 pieces. Walnut.
No. 1507G—Dining Room, 8 pieces. Green.



KITCHEN

No. 2004W—Kitchen. White.
No. 2004G—Kitchen. Green.



BEDROOM

No. 2002—Bedroom. Gold.
No. 2002P—Bedroom. Pink.
No. 2002B—Bedroom. Blue.



LIVING ROOM

No. 2001—Living Room. Gold.
No. 2001G—Living Room. Green.



DINING ROOM

No. 2003A—Dining Room. Walnut.
No. 2003G—Dining Room. Green.

DOWST MANUFACTURING CO.
4533-4541 FULTON ST. CHICAGO, ILL.

★ DIVIDEND PAYERS ★

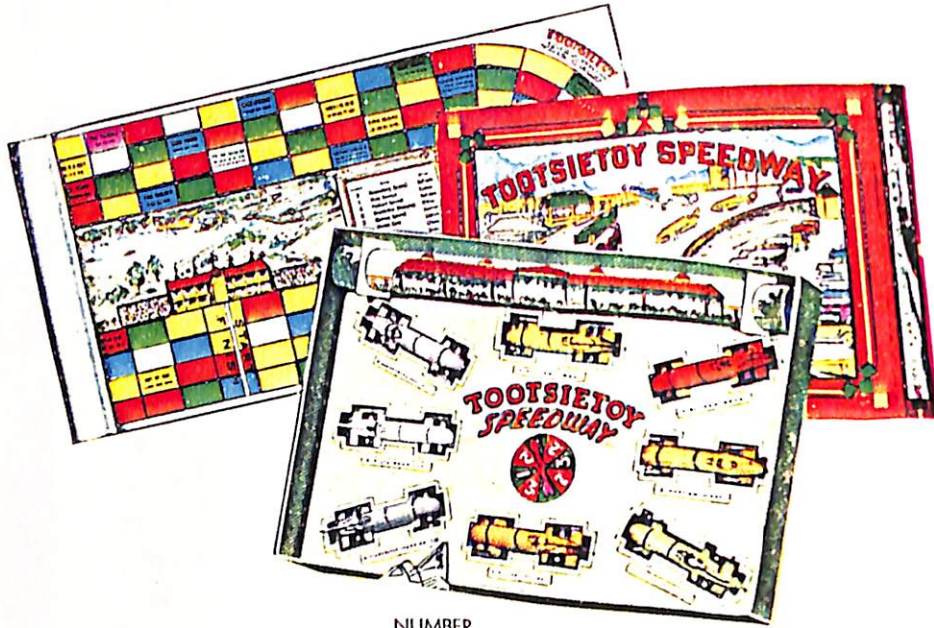
Ten of the most popular and profitable items from our line of 1932 have been revamped and modernized—but better still they have been changed in pricing to the extent that they are now possible for presentation as "price items" and "special sale" merchandise.

The addition of rubber tires, where possible, and the improvement in boxing and display features, have modernized these items to the extent that they are hardly recognizable as items from a previous season.

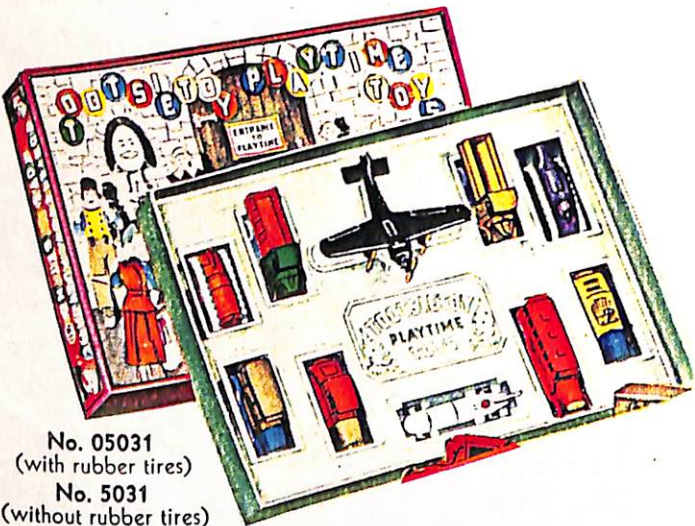
They are truly
"dividend payers"

F

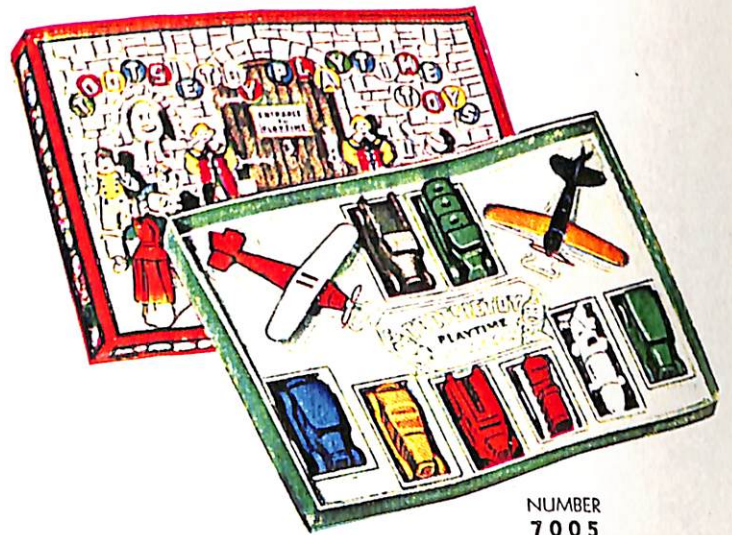
▶ TOOTSIETOYS ◀



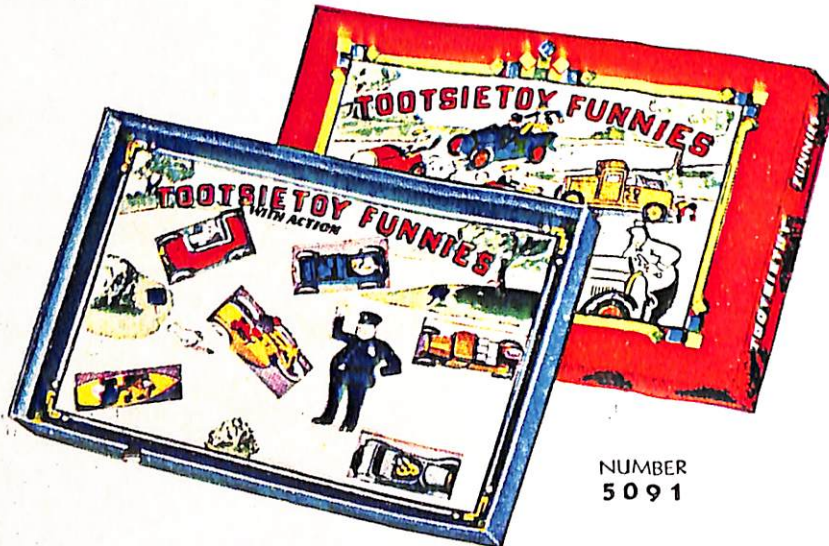
NUMBER
05081



No. 05031
(with rubber tires)
No. 5031
(without rubber tires)

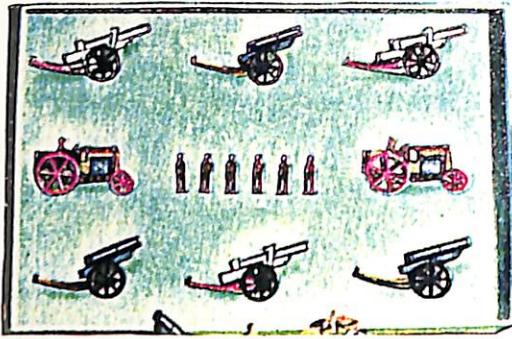


NUMBER
7005

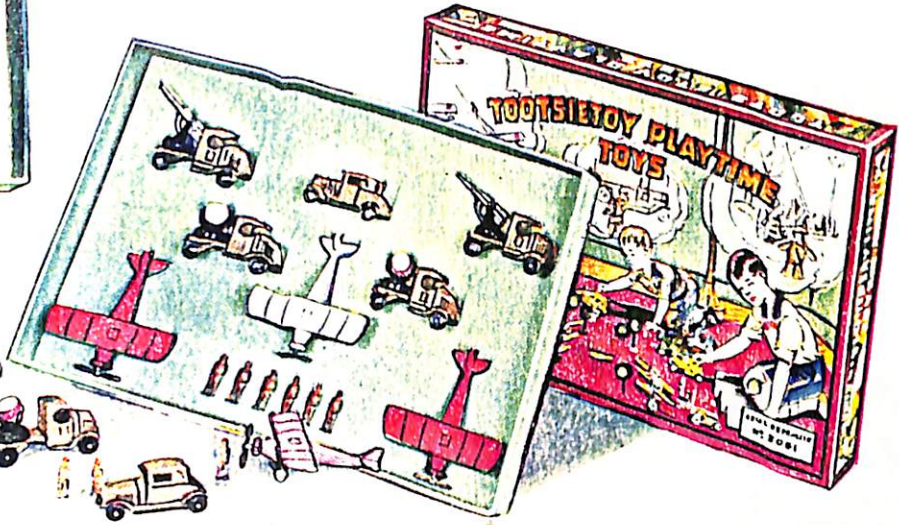


NUMBER
5091

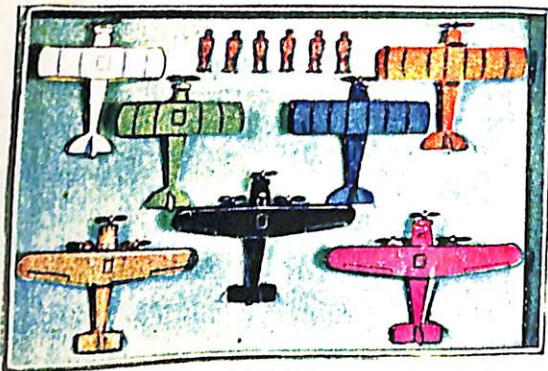
▶▶ TOOTSIETOYS ◀◀



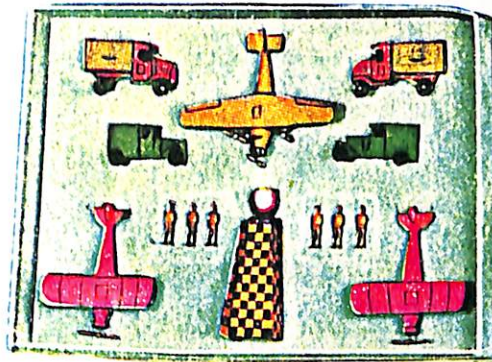
NUMBER
5071



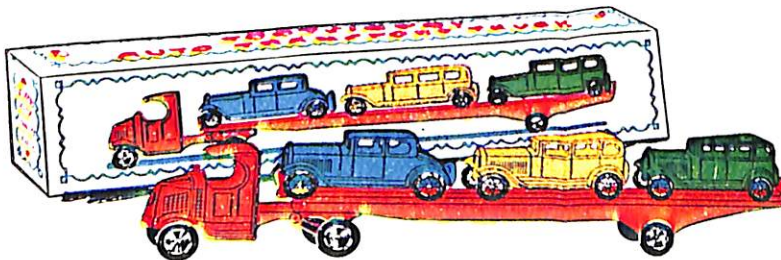
NUMBER
5061



NUMBER
5051



NUMBER
5041



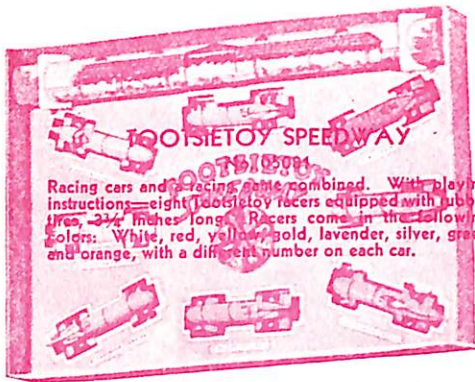
No. 0190 (with rubber tires)
No. 190 (without rubber tires)



NUMBER
190X

SEE BACK OF THIS PAGE FOR DESCRIPTION, PACKING,
WEIGHTS, AND OTHER ESSENTIAL INFORMATION

TOOTSIE TOYS



TOOTSIE TOY SPEEDWAY
No. 5001
Racing cars and a racing game combined. With playing instructions—eight Tootsie toy racers equipped with rubber tires, 3 1/4 inches long. Racers come in the following colors: White, red, yellow, gold, lavender, silver, green and orange, with a different number on each car.



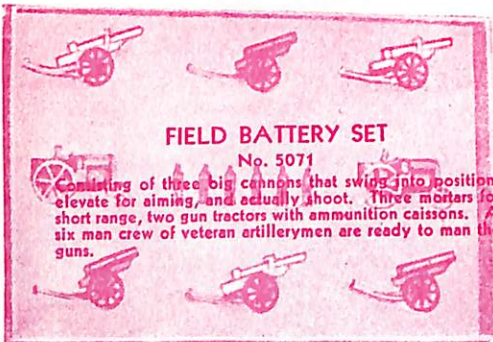
PLAYTIME TOYS
No. 5031 (without rubber tires)
Consists of 10 Tootsie toys—army tank, new racer, tri-motor plane, caterpillar tractor, overland bus, roadster, sedan, Mack store truck, Mack tank truck and coupe—all packed the "perfection way."
No. 5031
Same description as above except with rubber tires.



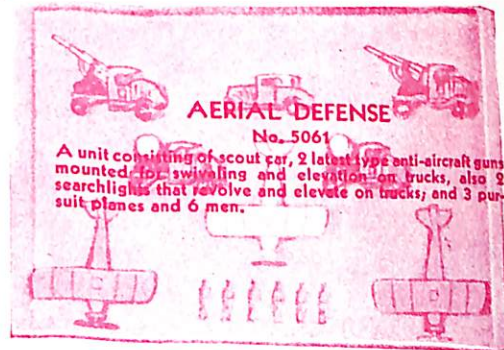
TOOTSIE TOY MINIATURES
No. 7005
Ten Tootsie toys all different—colorful—packed the perfection way. A big set of outstanding toys to complete the ever-growing Tootsie Toy Playtime Toy.



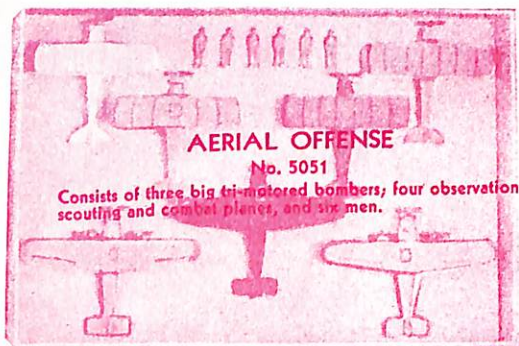
TOOTSIE TOY FUNNIES
No. 5091
Nationally famous newspaper comic characters are now reproduced as Tootsie toys. "ACTION" . . . Each one actually moves. . . As car moves, old Andy Gump moves. . . Imagine Alton Mullins or Smitty in action! That's what they all do in Tootsie Toy Funnies. In true-to-life hand colorings . . . all packed the "perfection way."



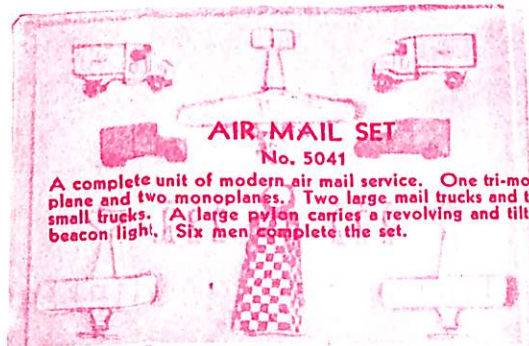
FIELD BATTERY SET
No. 5071
Consisting of three big cannons that swing into position, elevate for aiming, and actually shoot. Three mortars for short range, two gun tractors with ammunition caissons. A six man crew of veteran artillerymen are ready to man the guns.



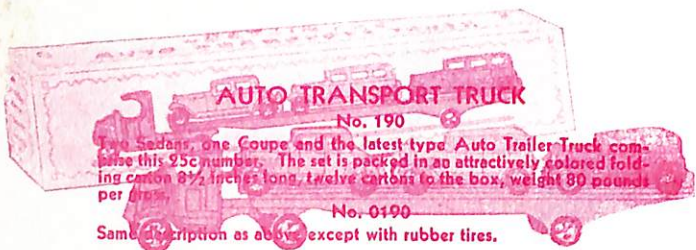
AERIAL DEFENSE
No. 5061
A unit consisting of scout car, 2 latest type anti-aircraft guns mounted for swiveling and elevation on trucks, also 2 searchlights that revolve and elevate on trucks; and 3 pursuit planes and 6 men.



AERIAL OFFENSE
No. 5051
Consists of three big tri-motored bombers; four observation, scouting and combat planes, and six men.



AIR MAIL SET
No. 5041
A complete unit of modern air mail service. One tri-motor plane and two monoplanes. Two large mail trucks and two small trucks. A large pylon carries a revolving and tilting beacon light. Six men complete the set.



AUTO TRANSPORT TRUCK
No. 0190
Two Sedans, one Coupe and the latest type Auto Trailer-Truck comprise this 25c number. The set is packed in an attractively colored folding carton 8 1/2 inches long, twelve cartons to the box, weight 80 pounds per gross.
No. 0190
Same description as above except with rubber tires.



FORCAR TRANSPORT
No. 190X
Mack truck and trailer with four miniature automobiles mounted on trailer. Packed in individual box measuring eleven inches in length and weighs 90 pounds to the gross.

TOOTSIE TOYS

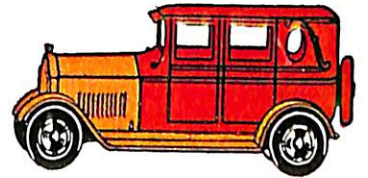
These Items Come Furnished With and Without Rubber Tires



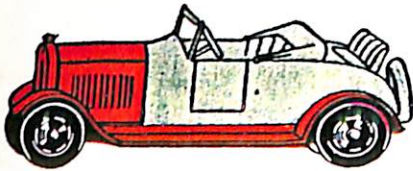
No. 04680 (with rubber tires)
No. 4680 (without rubber tires)



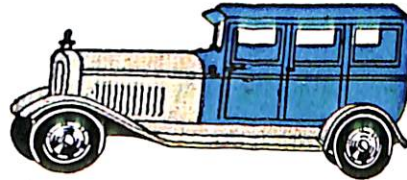
No. 023 (with rubber tires)
No. 23 (without rubber tires)



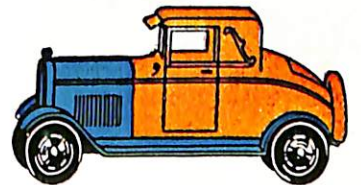
No. 06-03 (with rubber tires)
No. 6-03 (without rubber tires)



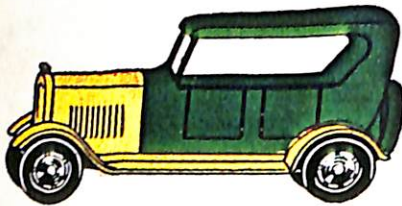
No. 06-01 (with rubber tires)
No. 6-01 (without rubber tires)



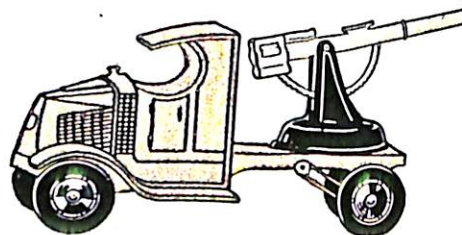
No. 06-04 (with rubber tires)
No. 6-04 (without rubber tires)



No. 06-02 (with rubber tires)
No. 6-02 (without rubber tires)



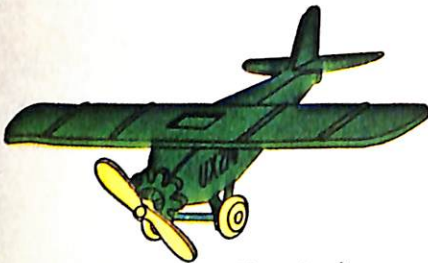
No. 06-05 (with rubber tires)
No. 6-05 (without rubber tires)



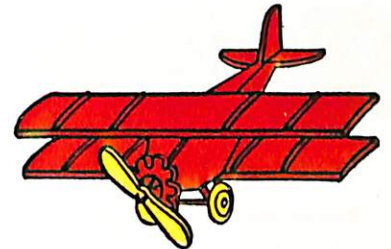
No. 04643 (with rubber tires)
No. 4643 (without rubber tires)



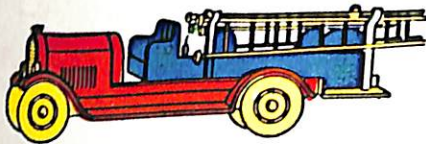
No. 04666 (with rubber tires)
No. 4666 (without rubber tires)



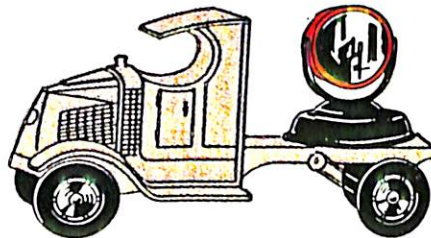
No. 04660 (with rubber tires)
No. 4660 (without rubber tires)



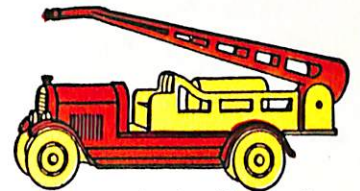
No. 04675 (with rubber tires)
No. 4675 (without rubber tires)



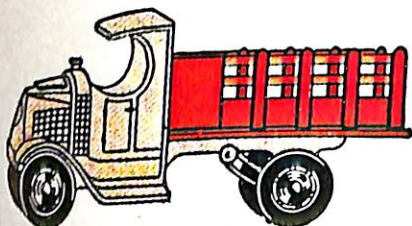
No. 04652 (with rubber tires)
No. 4652 (without rubber tires)



No. 04644 (with rubber tires)
No. 4644 (without rubber tires)



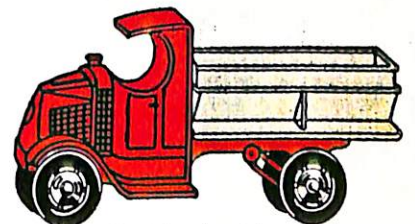
No. 04653 (with rubber tires)
No. 4653 (without rubber tires)



No. 04638 (with rubber tires)
No. 4638 (without rubber tires)



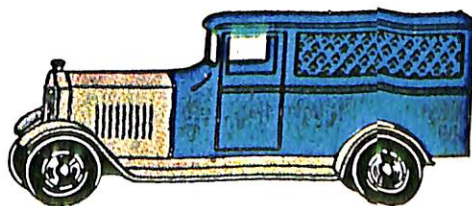
No. 04640 (with rubber tires)
No. 4640 (without rubber tires)



No. 04639 (with rubber tires)
No. 4639 (without rubber tires)



No. 04630 (with rubber tires)
No. 4630 (without rubber tires)



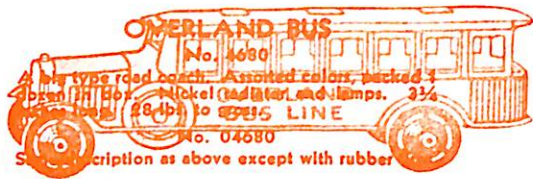
No. 06-06 (with rubber tires)
No. 6-06 (without rubber tires)



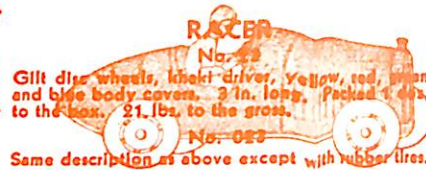
No. 04645 (with rubber tires)
No. 4645 (without rubber tires)

SEE BACK OF THIS PAGE FOR DESCRIPTION, PACKING, WEIGHTS, AND OTHER ESSENTIAL INFORMATION

TOOTSIE TOYS



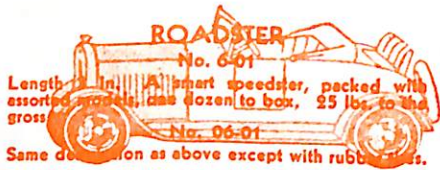
OVERLAND BUS
No. 4680
A big type road coach. Assorted colors, packed 3
to a box. Nickel headlights and lamps. 3 1/4
in. long. 28 lbs. to the gross.
No. 04680
Same description as above except with rubber



RACER
No. 002
Gilt disc wheels, khaki driver, yellow, red, green
and blue body covers. 3 in. long. Packed 1 doz.
to the box. 21 lbs. to the gross.
No. 002
Same description as above except with rubber tires.



BROUGHAM
No. 6-02
Four different models in various color combinations.
Length 3 in. Boxed by the doz. with assorted
models. 29 lbs. to the gross.
No. 06-02
Same description as above except with rubber tires.



ROADSTER
No. 6-01
Length 3 in. A smart speedster, packed with
assorted models, one dozen to box. 25 lbs. to the
gross.
No. 06-01
Same description as above except with rubber tires.



SEDAN
No. 6-04
Length 3 in. Assorted models, packed one doz. to
box. 27 lbs. to the gross.
No. 06-04
Same description as above except with rubber tires.



COUPE
No. 6-08
Cabriolet type. 3 in. long. Packed with assorted
models. 1 doz. to box. 24 lbs. to the gross.
No. 06-08
Same description as above except with rubber tires.



TOURING CAR
No. 6-05
Three colors as illustrated, packed with assorted
models, one dozen to box. Length 3 in. 26 lbs.
to the gross.
No. 06-05
Same description as above except with rubber tires.



ANTI-AIRCRAFT GUN
No. 4643
Gun mounted on gray truck. The gun barrel
divides into black base revolver. Packed 1 dozen
to box. Length 3 1/4 in. Weight 24 lbs. to gross.
No. 04643
Same description as above except with rubber tires.



RACER
No. 4666
An exact reproduction of the "World's Fastest
Racer." Length 3 1/4 inches. Color assortment
Red, white, green and yellow. 3 each to the box.
Weight 20 pounds to the gross.
No. 04666
Same description as above except with rubber tires.



AERO-DAWN
No. 4660
Whirlwind motor, revolving propeller and wheels.
3 1/4 inch wingspread. 3 1/4 inches from propeller to
tail. Individually boxed. Carton of twelve
contains 6 silver, 3 red, and 3 green planes, and
forms, when opened, reveals interesting display scene.
No. 04660
Same description as above except with rubber tires.



WINGS
No. 4675
Biplane with whirlwind motor. 3 1/4 inch wings-
spread. Propeller whirrs and wheels roll. 6 silver,
3 red and 3 blue planes to standard display carton
of dozen each are separately boxed. Display
shows stirring war scene with "Wings" inserted in
full flight in foreground.
No. 04675
Same description as above except with rubber tires.



SEARCHLIGHT
No. 4644
Mounted on gray truck—elevates and revolves, has
reflecting lens. Three colors as illustrated. Packed
1 dozen to box. Length 3 1/4 inches. Weight 23
lbs. to gross.
No. 04644
Same description as above except with rubber tires.



WATER TOWER
No. 4653
Length 3 1/4 in. Water tower raises and lowers.
Three colors as illustrated. 28 lbs. to the gross.
Packed one dozen to box.
No. 04653
Same description as above except with rubber tires.



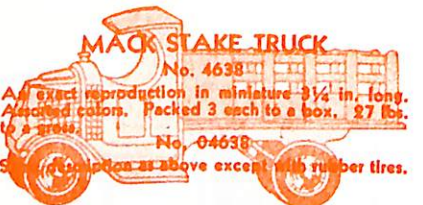
HOOK AND LADDER
No. 4652
3 1/4 in. long. Gilt disc wheels and 9 fire ladders.
Assorted colors. Packed 3 each to a box. 27 lbs.
to a gross.
No. 04652
Same description as above except with rubber tires.



MACK TANK TRUCK
No. 4640
Length 3 1/4 in. 30 lbs. to the gross. A popular
little model. Assorted colors, packed one doz. to
box.
No. 04640
Same description as above except with rubber tires.



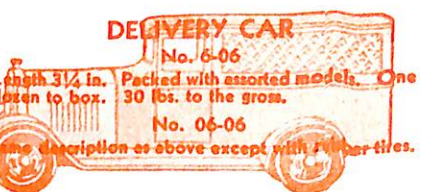
MACK COAL TRUCK
No. 4639
A sturdy truck in assorted colors, packed one doz.
to box. 3 1/4 in. long. 28 lbs. to the gross.
No. 04639
Same description as above except with rubber tires.



MACK STAKE TRUCK
No. 4638
An exact reproduction in miniature 3 1/4 in. long.
Assorted colors. Packed 3 each to a box. 27 lbs.
to a gross.
No. 04638
Same description as above except with rubber tires.



DELIVERY TRUCK
No. 4680
Length 3 in. Assorted colors, packed 1 doz. in
box. 26 lbs. to the gross.
No. 04680
Same description as above except with rubber tires.



DELIVERY CAR
No. 6-06
Length 3 1/4 in. Packed with assorted models. One
dozen to box. 30 lbs. to the gross.
No. 06-06
Same description as above except with rubber tires.



MAIL TRUCK
No. 4645
Length 3 1/4 in. Packed one dozen to box. Sturdy
Mack Truck chassis and U.S. Mail insignia on body.
Weight 30 lbs. to gross.
No. 04645
Same description as above except with rubber tires.



TOOTSIETOYS



NUMBER
4620



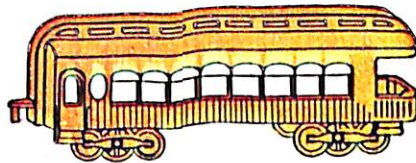
NUMBER
4621



NUMBER
4691



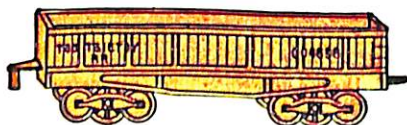
NUMBER
4690



NUMBER
4692



NUMBER
4695



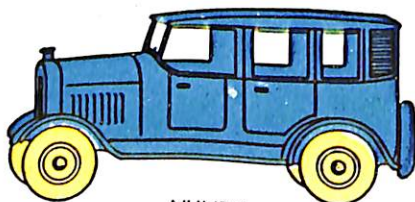
NUMBER
4696



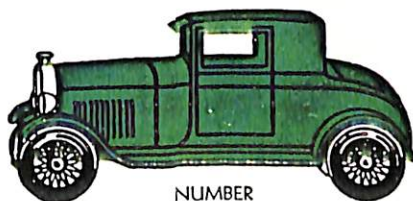
NUMBER
7020



NUMBER
4697



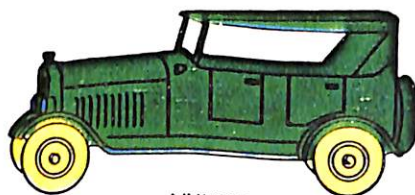
NUMBER
4629



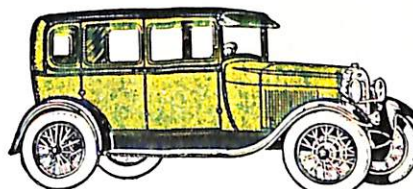
NUMBER
4655



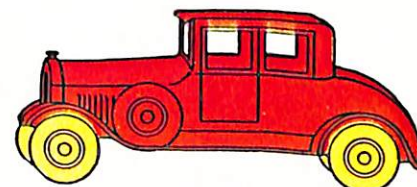
NUMBER
4651



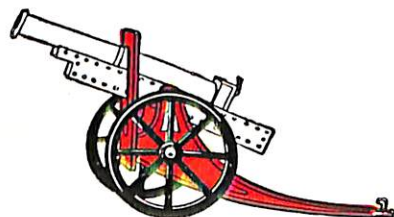
NUMBER
4641



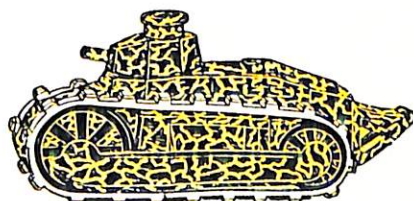
NUMBER
4665



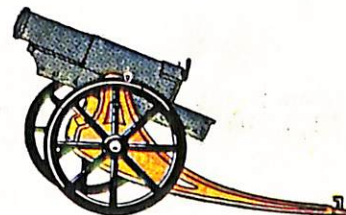
NUMBER
4636



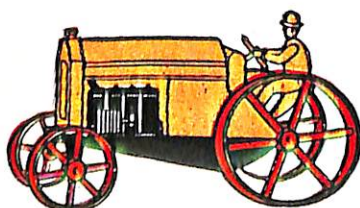
NUMBER
4642



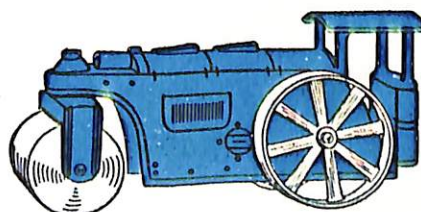
NUMBER
4647



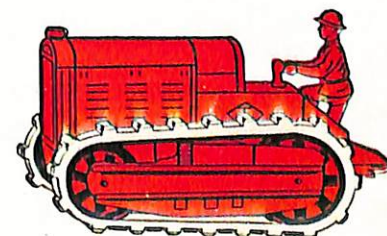
NUMBER
4662



NUMBER
4654



NUMBER
4648



NUMBER
4646

TOOTSIE TOYS



Powerful all black locomotive. Has five wheels. Length 2 1/2 in. Packed one dozen to the box. Weight 20 lbs. to the gross.



Black to match locomotive. Has rolling wheels. Length 1 1/2 in. Packed one dozen to the box. Weight 10 lbs.



Finished in all details. Yellow, red, green and blue. Length 2 1/2 in. Packed one dozen to the box. Weight 20 lbs. to the gross.



Rolls on its own wheels. Yellow, red, green and blue. Length 3 1/4 in. Packed one dozen to the box. Weight 19 lbs. to the gross.



Four different colors, packed in box of one dozen. Length 3 1/4 in. long. 19 lbs. to the gross.



Sturdy and realistic. Yellow, red, green and blue. Packed one dozen to the box. Length 3 1/2 in. Weight 20 lbs. to the gross.



Assortment of four colors. Length 3 1/4 in. 18 lbs. to one gross. One dozen to box.



Ten assorted small toys in colored folding box with calophane top. Packed 3 dozen to display carton. Weight 19 lbs. to gross.



Length 3 1/4 in. Four different colors, packed 3 each to a box. Weight 22 lbs. to gross.



Length 3 in. Red, yellow, green and blue with gold disc wheels. 3 each to box of one dozen. 23 lbs. to the gross.



Enamel in bright colors, has crown fender, nickel-plated wheels, nickel-plated radiator and grille. One dozen, individual display feature.



Finished in attractive enamel colors of yellow, red, green and blue. All brass disc wheels. Length 3 1/4 in. Weight 25 lbs. to the gross. One dozen to box.



Assorted colors, yellow, red, green and blue with gilt wheels. Length 3 1/4 in. One doz. to the box. 25 lbs. to the gross.



Comes in bright enamel red, blue, yellow and green, with nickel radiator and lamps. One dozen to box with display feature.



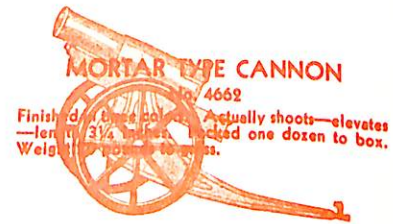
Painted enamel colors of yellow, red, green and blue with gold disc wheels. 3 in. long. 23 lbs. to the gross.



Finished in three colors as illustrated—actually shoots—elevates—length 3 1/2 in. Packed one dozen in box. Weight 23 lbs. to gross.



Reproduction of latest type—Caterpillar type. Finished in various camouflage colors. Length 3 1/2 inches. Packed 3 each to box of one dozen.



Finished in three colors. Actually shoots—elevates—length 3 1/4 inches. Packed one dozen to box. Weight 20 lbs. to gross.



3 1/2 in. long. Assorted colors. Packed three each in box of 12. Weight 31 pounds to the gross.



Length 3 1/2 inches. Packed 1 doz. to the box, 3 each red, blue, green and yellow with silver roller and wheels. Weight 23 pounds to the gross.



Latest type. Length 2 7/8 ins. Packed 3 each, red, blue, green and yellow to box of 1 doz. Wt. 34 pounds to the gross.

DOWST MANUFACTURING CO.

4533-4541 FULTON ST. CHICAGO, ILL.



